

\$329,900 - 2609 10360 102 Street, Edmonton

MLS® #E4417928

\$329,900

1 Bedroom, 1.00 Bathroom, 515 sqft

Condo / Townhouse on 0.00 Acres

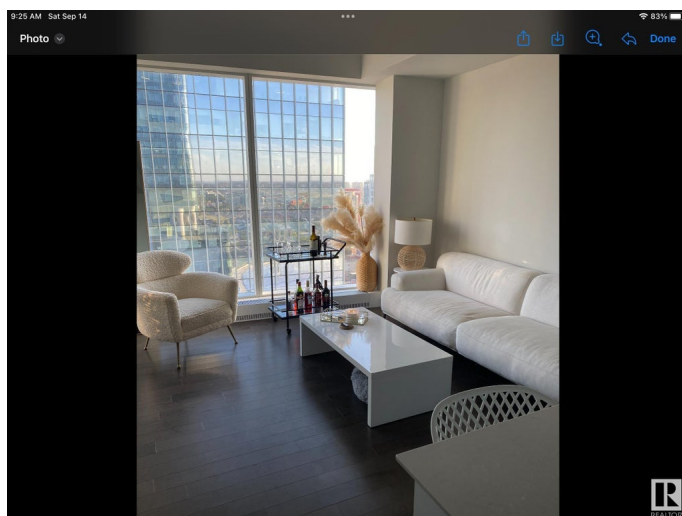
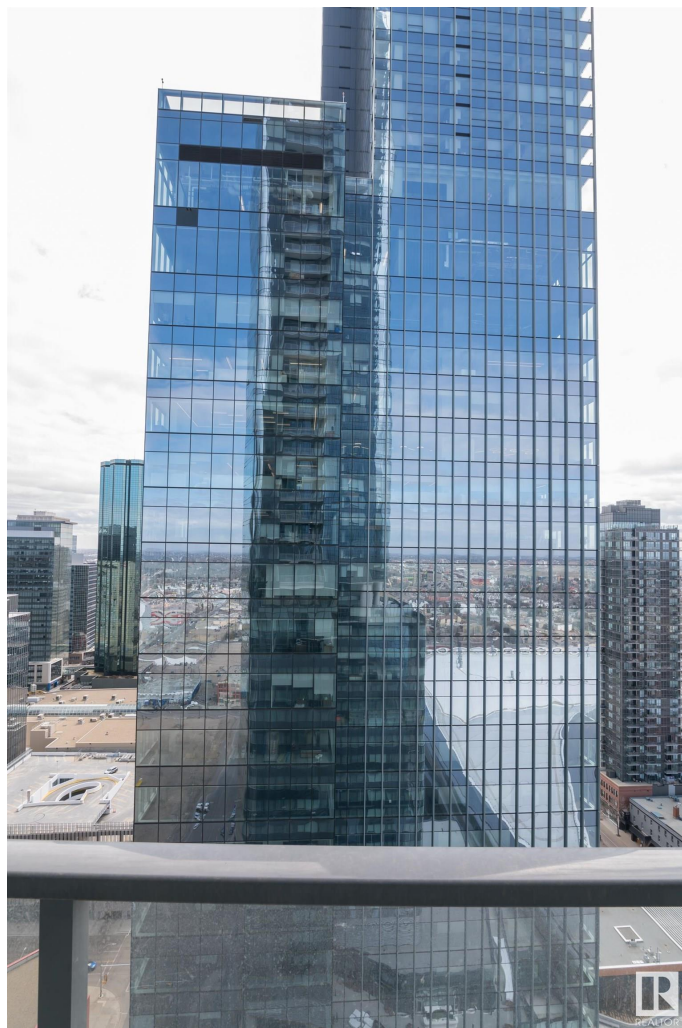
Downtown (Edmonton), Edmonton, AB

One of the nicest layouts with WIDER Living Room Space One titled underground Parking Stall. Enjoy a condo lifestyle with all the first class amenities above the J.W. MARRIOTT HOTEL. Enjoy unlimited access to ARCHETYPE Body by Bennet GYM, Indoor swimming pool, Hot Tub , Steam room and Yoga, Spin and boxing classes. Amenities like BILLIARDS Lounge, PET WALK AREA, OUT DOOR PATIO AND BBQ ,ROOFTOP DECK, CONFERENCE ROOM. 24/7 CONCIERGE SERVICE. PEDWAY system direct access to LRT ,Grocery Market ,restaurants and more. The LEGENDS PRIVATE RESIDENCE IN THE ICE DISTRICT a great place to call home.

Built in 2019

Essential Information

| | |
|----------------|-------------------|
| MLS® # | E4417928 |
| Price | \$329,900 |
| Bedrooms | 1 |
| Bathrooms | 1.00 |
| Full Baths | 1 |
| Square Footage | 515 |
| Acres | 0.00 |
| Year Built | 2019 |
| Type | Condo / Townhouse |



| | |
|----------|------------------------|
| Sub-Type | Apartment High Rise |
| Style | Single Level Apartment |
| Status | Active |

Community Information

| | |
|-------------|-----------------------|
| Address | 2609 10360 102 Street |
| Area | Edmonton |
| Subdivision | Downtown (Edmonton) |
| City | Edmonton |
| County | ALBERTA |
| Province | AB |
| Postal Code | T5J 0K6 |

Amenities

| | |
|----------------|---|
| Amenities | Intercom, Parking-Visitor, Security Door, Social Rooms, Concierge Service, Rooftop Deck/Patio |
| Parking Spaces | 1 |
| Parking | Underground |

Interior

| | |
|--------------|--|
| Appliances | Air Conditioning-Central, Dishwasher-Built-In, Garage Opener, Hood Fan, Oven-Built-In, Oven-Microwave, Refrigerator, Stacked Washer/Dryer, Stove-Countertop Electric |
| Heating | Fan Coil, Natural Gas |
| # of Stories | 54 |
| Stories | 1 |
| Has Basement | Yes |
| Basement | None, No Basement |

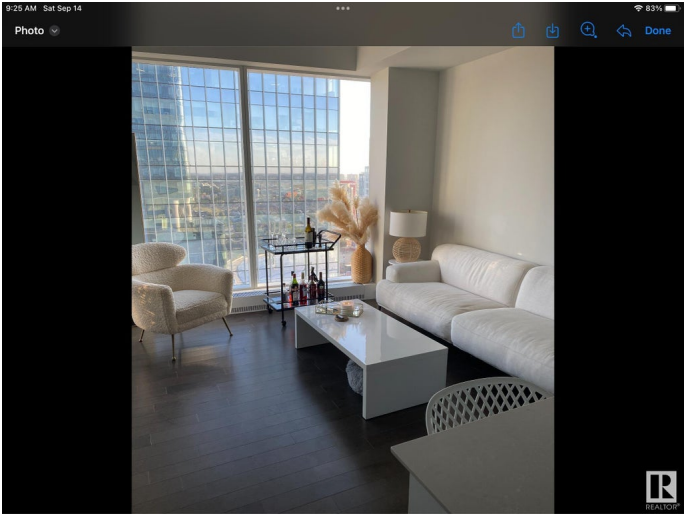
Exterior

| | |
|-------------------|---|
| Exterior | Concrete, Metal |
| Exterior Features | Golf Nearby, Shopping Nearby, View Downtown |
| Roof | EPDM Membrane |
| Construction | Concrete, Metal |
| Foundation | Concrete Perimeter |

Additional Information

| | |
|----------------|--------------------|
| Date Listed | January 13th, 2025 |
| Days on Market | 202 |
| Zoning | Zone 12 |

Condo Fee \$860



DATA IS DEEMED RELIABLE BUT IS NOT GUARANTEED ACCURATE BY THE REALTORS® ASSOCIATION OF EDMONTON. COPYRIGHT 2025 BY THE REALTORS® ASSOCIATION OF EDMONTON. ALL RIGHTS RESERVED.Trademarks are owned or controlled by the Canadian Real Estate Association (CREA) and identify real estate professionals who are members of CREA (REALTOR®, REALTORS®) and/or the quality of services they provide (MLS®, Multiple Listing Service®)

Listing information last updated on August 3rd, 2025 at 10:47am MDT