

\$514,888 - 8209 Kiriak Loop, Edmonton

MLS® #E4426636

\$514,888

3 Bedroom, 2.50 Bathroom, 1,392 sqft
Single Family on 0.00 Acres

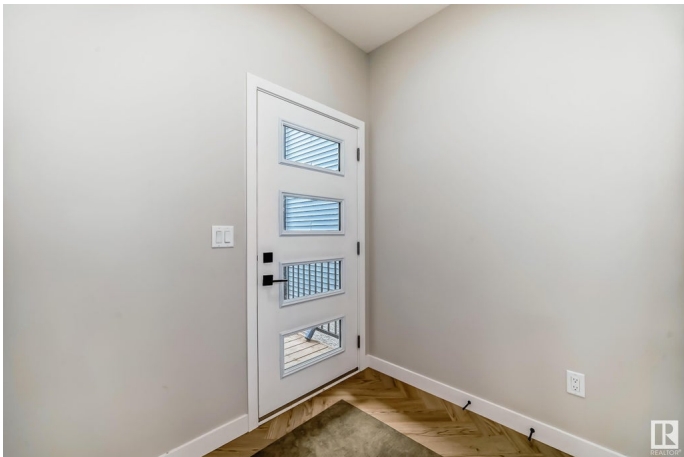
Keswick Area, Edmonton, AB

Discover modern living in this stunning single-family home in Keswick of Arbours! Featuring an attached double garage with a side entrance, this home is designed for style and function. The open main floor boasts thoughtfully defined spaces, including a stunning kitchen with 3m quartz countertops, 42” light wood-toned cabinets, a pantry, and a water line to the fridge. Upstairs, enjoy the convenience of a dedicated laundry room, three inviting bedrooms, and a luxurious primary suite complete with a walk-in closet and spa-inspired en-suite. Scheduled to start construction with tentative completion december. \$3,000 appliance allowance & rough-grading included. Photos of previous build, interior colors are NOT represented. HOA TBD.

Built in 2025

Essential Information

| | |
|----------------|-----------|
| MLS® # | E4426636 |
| Price | \$514,888 |
| Bedrooms | 3 |
| Bathrooms | 2.50 |
| Full Baths | 2 |
| Half Baths | 1 |
| Square Footage | 1,392 |
| Acres | 0.00 |



| | |
|------------|------------------------|
| Year Built | 2025 |
| Type | Single Family |
| Sub-Type | Detached Single Family |
| Style | 2 Storey |
| Status | Active |

Community Information

| | |
|-------------|------------------|
| Address | 8209 Kiriak Loop |
| Area | Edmonton |
| Subdivision | Keswick Area |
| City | Edmonton |
| County | ALBERTA |
| Province | AB |
| Postal Code | T6W 5S2 |

Amenities

| | |
|-----------|----------------------------|
| Amenities | Ceiling 9 ft., See Remarks |
| Parking | Double Garage Attached |

Interior

| | |
|-------------------|--|
| Interior Features | ensuite bathroom |
| Appliances | Garage Control, Garage Opener, Hood Fan, See Remarks |
| Heating | Forced Air-1, Natural Gas |
| Stories | 2 |
| Has Basement | Yes |
| Basement | Full, Unfinished |

Exterior

| | |
|-------------------|---|
| Exterior | Wood, Vinyl |
| Exterior Features | Airport Nearby, Playground Nearby, Public Transportation, Schools, Shopping Nearby, See Remarks |
| Roof | Asphalt Shingles |
| Construction | Wood, Vinyl |
| Foundation | Concrete Perimeter |

Additional Information

| | |
|----------------|------------------|
| Date Listed | March 20th, 2025 |
| Days on Market | 44 |
| Zoning | Zone 56 |

HOA Fees 1

HOA Fees Freq. Annually

DATA IS DEEMED RELIABLE BUT IS NOT GUARANTEED ACCURATE BY THE REALTORS® ASSOCIATION OF EDMONTON. COPYRIGHT 2025 BY THE REALTORS® ASSOCIATION OF EDMONTON. ALL RIGHTS RESERVED. Trademarks are owned or controlled by the Canadian Real Estate Association (CREA) and identify real estate professionals who are members of CREA (REALTOR®, REALTORS®) and/or the quality of services they provide (MLS®, Multiple Listing Service®)

Listing information last updated on May 3rd, 2025 at 8:47pm MDT