

\$249,900 - 11019 162a Avenue, Edmonton

MLS® #E4428713

\$249,900

3 Bedroom, 1.50 Bathroom, 1,136 sqft
Condo / Townhouse on 0.00 Acres

Lorelei, Edmonton, AB

This 3-bedroom, 2-bathroom home boasts the best location in the complex, tucked away at the back of a quiet cul-de-sac in Lorelei. Features a separate basement entrance, this beautifully renovated property offers a bright and spacious living room with large vinyl windows, luxurious vinyl plank flooring (with carpet over the living room for added comfort), a dining area overlooking the yard, and a modern kitchen with a stylish backsplash & newer stainless steel appliances. A sleek 2-piece bath completes the main floor. Upstairs, you'll find a generous primary bedroom with two large windows, two additional bedrooms, and a contemporary 4-piece bath featuring a matching backsplash to the kitchen for a cohesive design. The basement provides a spacious rec room with two windows and ample storage. Conveniently located within walking distance to Beaumaris Lake, parks, schools, shopping, and transit. Recent upgrades include new flooring, appliances, and more. A fantastic investment opportunity or the perfect home!

Built in 1977

Essential Information

MLS® #	E4428713
Price	\$249,900



Bedrooms	3
Bathrooms	1.50
Full Baths	1
Half Baths	1
Square Footage	1,136
Acres	0.00
Year Built	1977
Type	Condo / Townhouse
Sub-Type	Townhouse
Style	2 Storey
Status	Active

Community Information

Address	11019 162a Avenue
Area	Edmonton
Subdivision	Lorelei
City	Edmonton
County	ALBERTA
Province	AB
Postal Code	T5X 2A1

Amenities

Amenities	Carbon Monoxide Detectors, Detectors Smoke, No Animal Home, No Smoking Home, Parking-Visitor, Patio, Vinyl Windows, See Remarks
Parking	2 Outdoor Stalls, Stall

Interior

Appliances	Dishwasher-Built-In, Dryer, Hood Fan, Refrigerator, Stove-Electric, Washer
Heating	Forced Air-1, Natural Gas
Stories	3
Has Basement	Yes
Basement	Full, Finished

Exterior

Exterior	Wood, Stucco
Exterior Features	Golf Nearby, Playground Nearby, Public Transportation, Schools, Shopping Nearby
Roof	Asphalt Shingles

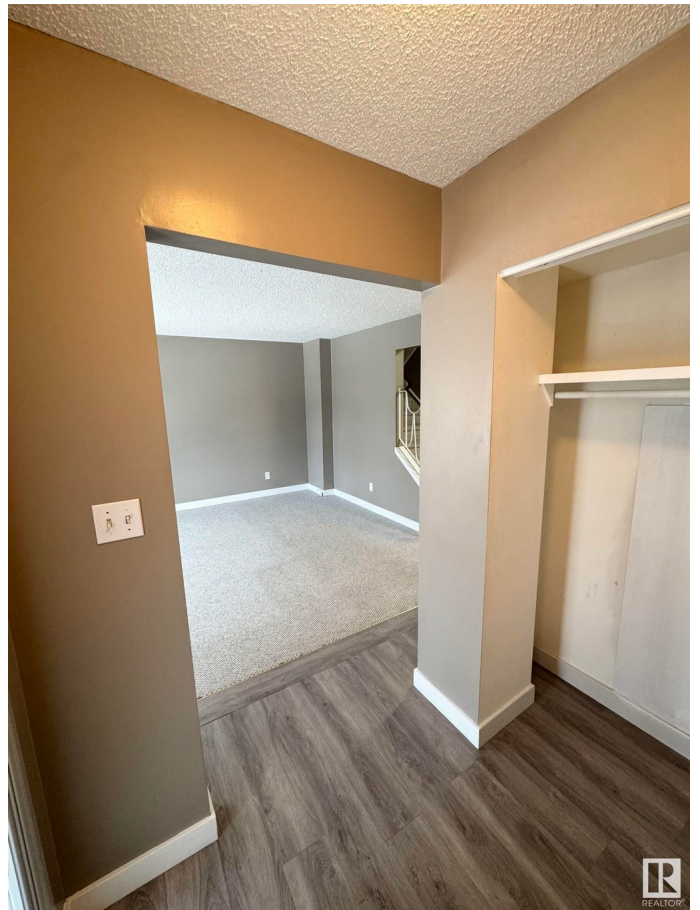
Construction	Wood, Stucco
Foundation	Concrete Perimeter

School Information

Elementary	Lorelei, Baturyn, St.Charl
Middle	Mary Butterworth, Dunluce
High	M.E Laz, Queen E, O'Leary

Additional Information

Date Listed	April 3rd, 2025
Days on Market	33
Zoning	Zone 27
Condo Fee	\$388



DATA IS DEEMED RELIABLE BUT IS NOT GUARANTEED ACCURATE BY THE REALTORS® ASSOCIATION OF EDMONTON. COPYRIGHT 2025 BY THE REALTORS® ASSOCIATION OF EDMONTON. ALL RIGHTS RESERVED. Trademarks are owned or controlled by the Canadian Real Estate Association (CREA) and identify real estate professionals who are members of CREA (REALTOR®, REALTORS®) and/or the quality of services they provide (MLS®, Multiple Listing Service®)

Listing information last updated on May 6th, 2025 at 12:32am MDT