

## \$242,900 - 16b Meadowlark Village, Edmonton

MLS® #E4430105

**\$242,900**

2 Bedroom, 1.50 Bathroom, 1,098 sqft  
Condo / Townhouse on 0.00 Acres

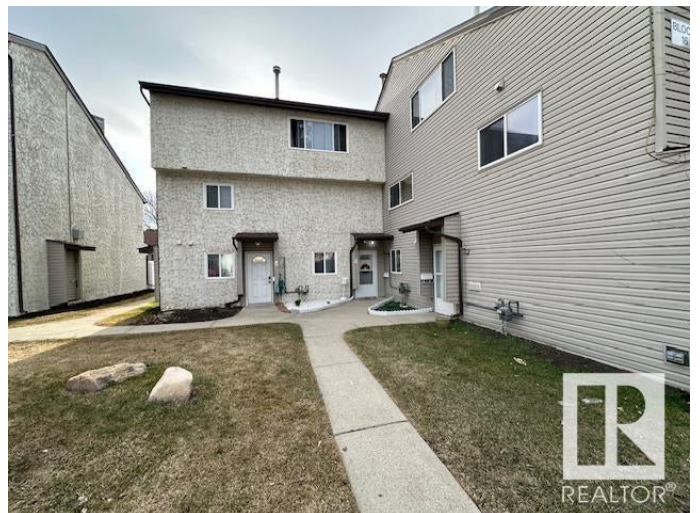
West Meadowlark Park, Edmonton, AB

Beautifully renovated 2-story Townhouse in Meadowlark Village ! This upgraded 2-bedroom, 1.5-bath townhouse offers over 1100 sq feet comfortable living space. Enjoy the convenience of in-suite laundry, and ample storage, all wrapped up in a stylish, move in ready home. Located in a well-maintained complex with LOW CONDO fees, -the major updates are already taken care of - NEWER ROOFS, SIDINGS, WINDOWS, DOORS, -and a DURABLE NEW VINYL FENCE. Step outside to your private, specious yard- perfect for relaxing or entertaining. Townhouse is nestled in the heart of Meadowlark Village, just steps away from public transit, schools, parks, and shopping. West Edmonton Mall is only minutes away on foot. Ideal for first time buyers , young professionals, or a growing family. This is fantastic time to own in a prime West Edmonton Location.

Built in 1970

### Essential Information

MLS® #	E4430105
Price	\$242,900
Bedrooms	2
Bathrooms	1.50
Full Baths	1
Half Baths	1



Square Footage	1,098
Acres	0.00
Year Built	1970
Type	Condo / Townhouse
Sub-Type	Townhouse
Style	2 Storey
Status	Active

### Community Information

Address	16b Meadowlark Village
Area	Edmonton
Subdivision	West Meadowlark Park
City	Edmonton
County	ALBERTA
Province	AB
Postal Code	T5R 5X3

### Amenities

Amenities	Carbon Monoxide Detectors, Deck, Detectors Smoke, No Animal Home, No Smoking Home, Parking-Extra, Patio, Storage-In-Suite, Television Connection, Vinyl Windows
Parking	Stall

### Interior

Appliances	Dishwasher-Built-In, Dryer, Refrigerator, Stove-Electric, Washer
Heating	Forced Air-1, Natural Gas
Stories	2
Has Basement	Yes
Basement	None, No Basement

### Exterior

Exterior	Wood, Vinyl
Exterior Features	Fenced, Golf Nearby, Low Maintenance Landscape, No Through Road, Park/Reserve, Picnic Area, Playground Nearby, Public Swimming Pool, Public Transportation, Schools, Shopping Nearby
Roof	Asphalt Shingles
Construction	Wood, Vinyl
Foundation	Slab

### Additional Information

Date Listed	April 10th, 2025
Days on Market	23
Zoning	Zone 22
Condo Fee	\$223

DATA IS DEEMED RELIABLE BUT IS NOT GUARANTEED ACCURATE BY THE REALTORS® ASSOCIATION OF EDMONTON. COPYRIGHT 2025 BY THE REALTORS® ASSOCIATION OF EDMONTON. ALL RIGHTS RESERVED. Trademarks are owned or controlled by the Canadian Real Estate Association (CREA) and identify real estate professionals who are members of CREA (REALTOR®, REALTORS®) and/or the quality of services they provide (MLS®, Multiple Listing Service®)

Listing information last updated on May 3rd, 2025 at 9:02pm MDT