

\$594,900 - 15903 134 Street, Edmonton

MLS® #E4433748

\$594,900

6 Bedroom, 3.00 Bathroom, 1,521 sqft
Single Family on 0.00 Acres

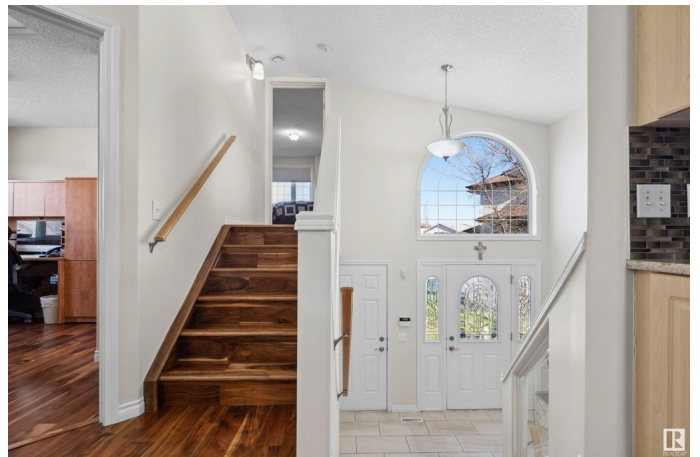
Carlton, Edmonton, AB

Rare Find! This immaculate bi-level sits on a massive pie-shaped lot with beautiful landscaping and an impressive 3-car garage—complete with radiant heat, floor drain, and a drive-through 4th door, perfect for backyard access. The spacious layout features a large primary suite above the garage with a 4pc ensuite and walk-in closet. Vaulted ceilings enhance the open main floor, which includes 2 bedrooms—one currently used as a laundry/office but easily converted back. Enjoy the bright, inviting covered sunroom off the dining area overlooking the stunning yard. Below, you’ll find a massive 300sq ft shed with concrete pad under the deck. The basement is bright and airy with large windows, and features 3 more bedrooms, a full bath, and a generous family room with gas fireplace. This is a rare opportunity you won’t want to miss!

Built in 2006

Essential Information

MLS® #	E4433748
Price	\$594,900
Bedrooms	6
Bathrooms	3.00
Full Baths	3
Square Footage	1,521



Acres	0.00
Year Built	2006
Type	Single Family
Sub-Type	Detached Single Family
Style	Bi-Level
Status	Active

Community Information

Address	15903 134 Street
Area	Edmonton
Subdivision	Carlton
City	Edmonton
County	ALBERTA
Province	AB
Postal Code	T6V 1S4

Amenities

Amenities	Air Conditioner, No Animal Home, No Smoking Home, Sunroom, Vaulted Ceiling, See Remarks, Natural Gas BBQ Hookup
Parking	Heated, Over Sized, RV Parking, Triple Garage Attached

Interior

Interior Features	ensuite bathroom
Appliances	Air Conditioning-Central, Dishwasher-Built-In, Dryer, Microwave Hood Fan, Refrigerator, Storage Shed, Stove-Electric, Washer, Window Coverings
Heating	Forced Air-1, Natural Gas
Fireplace	Yes
Fireplaces	Corner
Stories	3
Has Basement	Yes
Basement	Full, Finished

Exterior

Exterior	Wood, Vinyl
Exterior Features	Corner Lot, Fenced, Landscaped, No Back Lane, Public Transportation, Schools, Shopping Nearby
Roof	Asphalt Shingles
Construction	Wood, Vinyl

Foundation Concrete Perimeter

Additional Information

Date Listed May 1st, 2025

Days on Market 1

Zoning Zone 27

DATA IS DEEMED RELIABLE BUT IS NOT GUARANTEED ACCURATE BY THE REALTORS® ASSOCIATION OF EDMONTON. COPYRIGHT 2025 BY THE REALTORS® ASSOCIATION OF EDMONTON. ALL RIGHTS RESERVED.Trademarks are owned or controlled by the Canadian Real Estate Association (CREA) and identify real estate professionals who are members of CREA (REALTOR®, REALTORS®) and/or the quality of services they provide (MLS®, Multiple Listing Service®)

Listing information last updated on May 2nd, 2025 at 9:17pm MDT