

\$410,000 - 10934 67 Avenue, Edmonton

MLS® #E4433885

\$410,000

2 Bedroom, 1.00 Bathroom, 784 sqft

Single Family on 0.00 Acres

Parkallen (Edmonton), Edmonton, AB

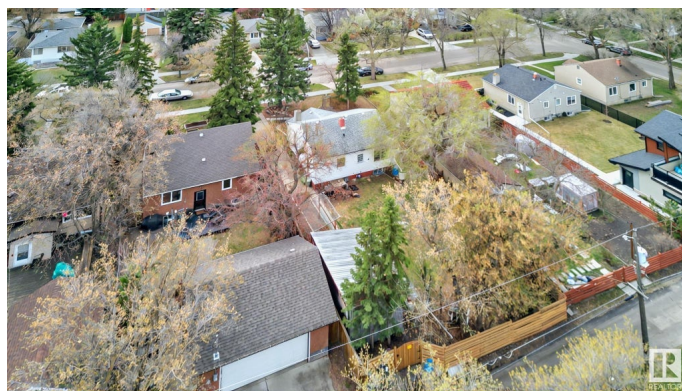
Classic Parkallen bungalow is the perfect investment opportunity! Highly sought after university neighborhood, this cozy home sits on an exceptional 48x130 lot and would make for the perfect canvas to live/rent and rebuild, hold or profit from re-development. The price is right, the lot size is right and the location is right! This charming home exudes character inside and out with 2 bedrooms, nearly 800sqft, 1 full bathroom. Come see for yourself!

Built in 1950

Essential Information

MLS® #	E4433885
Price	\$410,000
Bedrooms	2
Bathrooms	1.00
Full Baths	1
Square Footage	784
Acres	0.00
Year Built	1950
Type	Single Family
Sub-Type	Detached Single Family
Style	Bungalow
Status	Active

Community Information



Address	10934 67 Avenue
Area	Edmonton
Subdivision	Parkallen (Edmonton)
City	Edmonton
County	ALBERTA
Province	AB
Postal Code	T6H 2A4

Amenities

Amenities	See Remarks
Parking	2 Outdoor Stalls, Front Drive Access

Interior

Appliances	Dishwasher-Built-In, Dryer, Oven-Microwave, Refrigerator, Storage Shed, Stove-Electric, Washer, Window Coverings, TV Wall Mount
Heating	Forced Air-1, Natural Gas
Stories	1
Has Basement	Yes
Basement	Full, Partially Finished

Exterior

Exterior	Wood, Vinyl
Exterior Features	Back Lane, Flat Site, Public Transportation, Schools, Shopping Nearby
Roof	Asphalt Shingles
Construction	Wood, Vinyl
Foundation	Concrete Perimeter

Additional Information

Date Listed	May 1st, 2025
Days on Market	1
Zoning	Zone 15

DATA IS DEEMED RELIABLE BUT IS NOT GUARANTEED ACCURATE BY THE REALTORS® ASSOCIATION OF EDMONTON. COPYRIGHT 2025 BY THE REALTORS® ASSOCIATION OF EDMONTON. ALL RIGHTS RESERVED. Trademarks are owned or controlled by the Canadian Real Estate Association (CREA) and identify real estate professionals who are members of CREA (REALTOR®, REALTORS®) and/or the quality of services they provide (MLS®, Multiple Listing Service®)

Listing information last updated on May 2nd, 2025 at 9:17pm MDT