

\$225,000 - 211 10121 80 Avenue, Edmonton

MLS® #E4433923

\$225,000

1 Bedroom, 1.00 Bathroom, 748 sqft

Condo / Townhouse on 0.00 Acres

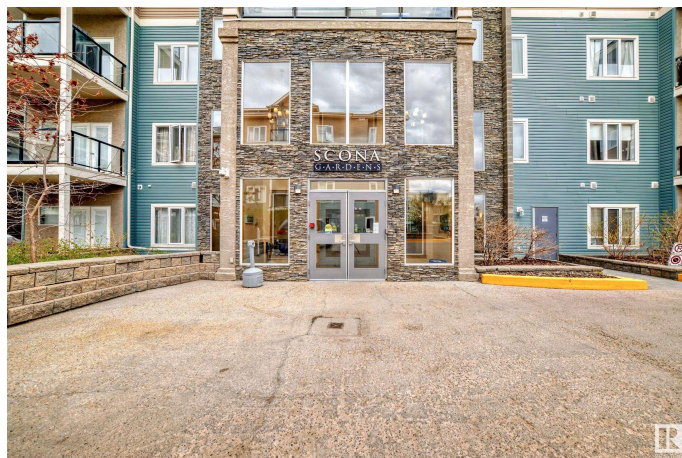
Ritchie, Edmonton, AB

Ritchie is where the life in Edmonton happens! Whether you are a professional working downtown, a university student, an investor or just want to live off Whyte ave and enjoy a quiet home at the same time--this place is perfect. Enter a large open-concept kitchen and living room space with a balcony overlooking a serene street laned with trees; there's a spacious bedroom with a walk-in closet and a large den perfect for a hobby room or an office--this condo has it all! The building is well-designed and boasts heated secure underground parking with a good size storage room; onsite car wash bay, a gym, a bike room, underground guest parking, and a workshop room. Live close to schools, restaurants, bars, and night life in Edmonton!

Built in 2006

Essential Information

MLS® #	E4433923
Price	\$225,000
Bedrooms	1
Bathrooms	1.00
Full Baths	1
Square Footage	748
Acres	0.00
Year Built	2006



Type	Condo / Townhouse
Sub-Type	Lowrise Apartment
Style	Single Level Apartment
Status	Active

Community Information

Address	211 10121 80 Avenue
Area	Edmonton
Subdivision	Ritchie
City	Edmonton
County	ALBERTA
Province	AB
Postal Code	T6E 0B9

Amenities

Amenities	On Street Parking, Air Conditioner, Car Wash, Ceiling 9 ft., Detectors Smoke, Exercise Room, Parking-Visitor, Secured Parking, Security Door, Social Rooms, Storage-Locker Room, Workshop
Parking Spaces	1
Parking	Heated, Insulated, Underground

Interior

Appliances	Air Conditioning-Central, Dishwasher-Built-In, Dryer, Garage Control, Microwave Hood Fan, Refrigerator, Stove-Electric, Washer
Heating	Fan Coil, Natural Gas
# of Stories	4
Stories	1
Has Basement	Yes
Basement	None, No Basement

Exterior

Exterior	Wood, Stone, Vinyl
Exterior Features	Landscaped, Playground Nearby, Public Transportation, Schools, Shopping Nearby, View City
Roof	Asphalt Shingles
Construction	Wood, Stone, Vinyl
Foundation	Concrete Perimeter

Additional Information

Date Listed	May 1st, 2025
-------------	---------------

Days on Market	2
Zoning	Zone 17
Condo Fee	\$491

DATA IS DEEMED RELIABLE BUT IS NOT GUARANTEED ACCURATE BY THE REALTORS® ASSOCIATION OF EDMONTON. COPYRIGHT 2025 BY THE REALTORS® ASSOCIATION OF EDMONTON. ALL RIGHTS RESERVED. Trademarks are owned or controlled by the Canadian Real Estate Association (CREA) and identify real estate professionals who are members of CREA (REALTOR®, REALTORS®) and/or the quality of services they provide (MLS®, Multiple Listing Service®)

Listing information last updated on May 3rd, 2025 at 8:02am MDT