

Courtesy Of John Rota Of Exp Realty

\$600,000 - 216 Crystal Creek Drive, Leduc

MLS® #E4433938

\$600,000

3 Bedroom, 3.00 Bathroom, 2,090 sqft

Single Family on 0.00 Acres

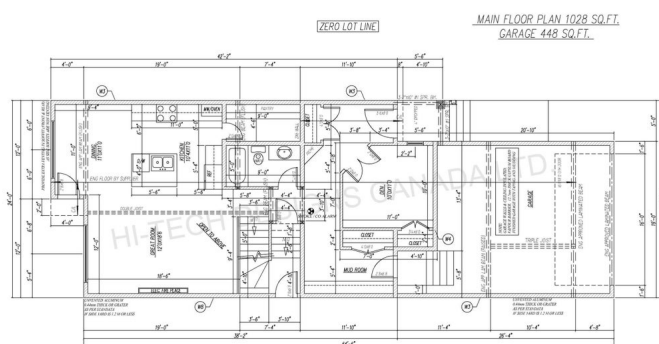
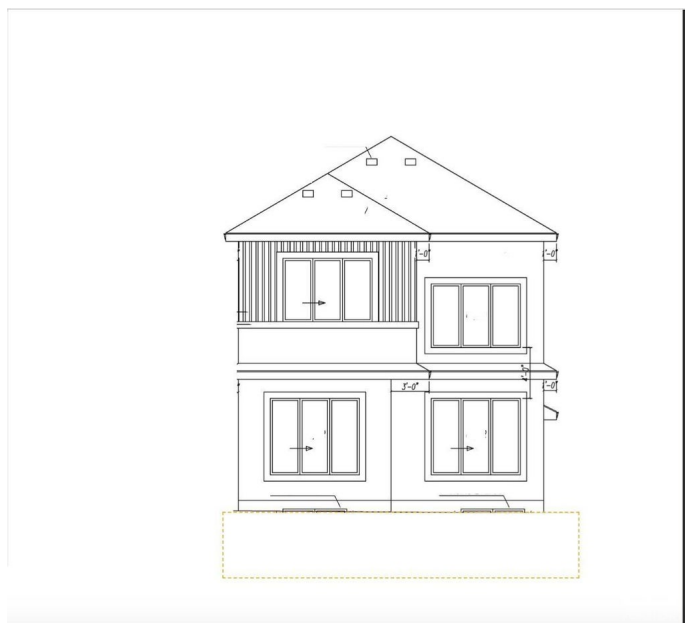
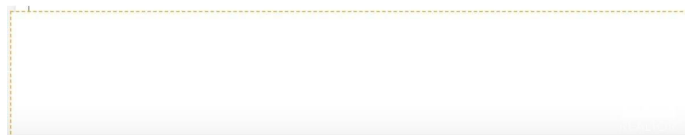
Crystal Creek_LEDU, Leduc, AB

Welcome to this stunning two-storey home in Leduc! The main floor offers a bright and open layout with a cozy living room featuring a fireplace, a dining area, a stylish kitchen with a pantry, a 4-piece bathroom, a den, and a mudroom for added convenience. Upstairs, you'll find a spacious bonus room, two bedrooms, a 4-piece bathroom, a laundry room and a luxurious primary suite with a walk-in closet and a 5-piece ensuite. Completing the home is an attached double garage, making it the perfect blend of style and functionality. Photos are of a completed show home and are for representation only. Selections can be customized

Built in 2025

Essential Information

MLS® #	E4433938
Price	\$600,000
Bedrooms	3
Bathrooms	3.00
Full Baths	3
Square Footage	2,090
Acres	0.00
Year Built	2025
Type	Single Family
Sub-Type	Detached Single Family



Style 2 Storey
Status Active

Community Information

Address 216 Crystal Creek Drive
Area Leduc
Subdivision Crystal Creek_LEDU
City Leduc
County ALBERTA
Province AB
Postal Code T9E 1N3

Amenities

Amenities Detectors Smoke, No Animal Home, No Smoking Home
Parking Double Garage Attached

Interior

Interior Features ensuite bathroom
Appliances See Remarks
Heating Forced Air-1, Natural Gas
Fireplace Yes
Fireplaces Tile Surround
Stories 2
Has Basement Yes
Basement Full, Unfinished

Exterior

Exterior Wood, Stone, Vinyl
Exterior Features Playground Nearby, Public Transportation, Schools, Shopping Nearby
Roof Asphalt Shingles
Construction Wood, Stone, Vinyl
Foundation Concrete Perimeter

Additional Information

Date Listed May 1st, 2025
Days on Market 127
Zoning Zone 81

DATA IS DEEMED RELIABLE BUT IS NOT GUARANTEED ACCURATE BY THE REALTORS® ASSOCIATION OF EDMONTON. COPYRIGHT 2025 BY THE REALTORS® ASSOCIATION OF EDMONTON. ALL RIGHTS RESERVED. Trademarks are owned or controlled by the Canadian Real Estate Association (CREA) and identify real

estate professionals who are members of CREA (REALTOR®®, REALTORS®®) and/or the quality of services they provide (MLS®®, Multiple Listing Service®®)

Listing information last updated on September 5th, 2025 at 12:17pm MDT