

\$534,707 - 20 Applewood Road, Sherwood Park

MLS® #E4433978

\$534,707

5 Bedroom, 2.50 Bathroom, 1,145 sqft

Single Family on 0.00 Acres

Maplewood (Sherwood Park), Sherwood Park, AB

Cute as a button 1144 sq ft bungalow nestled on a quiet, tree-lined street in a family-friendly neighborhood—just steps to Roasti Coffee, parks, schools & transit. This home features a large yard with mature landscaping and an oversized double detached garage—perfect for 2 vehicles, a workshop & extra storage. Inside, enjoy vaulted ceilings, warm tones & an open-concept layout that creates a welcoming, spacious feel. The main floor offers 3 bedrooms including a primary with 2-pc ensuite, plus a 4-pce main bath. A separate basement entrance leads to a second living space with laundry conveniently located prior to entering the second living area. The second living area is complete with a second kitchen, 2 more large bedrooms with walk in closets, a large living area and plenty of room for storage. Numerous upgrades include windows (2021), doors (2021), roof, furnace (2021), flooring (2021), fencing & basement kitchen (2021).

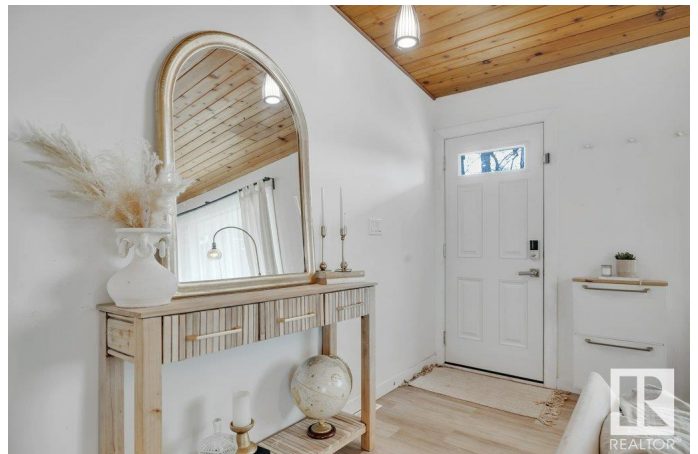
Built in 1970

Essential Information

MLS® # E4433978

Price \$534,707

Bedrooms 5



Bathrooms	2.50
Full Baths	2
Half Baths	1
Square Footage	1,145
Acres	0.00
Year Built	1970
Type	Single Family
Sub-Type	Detached Single Family
Style	Bungalow
Status	Active

Community Information

Address	20 Applewood Road
Area	Sherwood Park
Subdivision	Maplewood (Sherwood Park)
City	Sherwood Park
County	ALBERTA
Province	AB
Postal Code	T8A 0L3

Amenities

Amenities	On Street Parking, Carbon Monoxide Detectors, Closet Organizers, Deck, Detectors Smoke, Fire Pit, Hot Water Natural Gas, No Animal Home, Parking-Extra, Vaulted Ceiling, See Remarks
Parking	Double Garage Detached, Over Sized

Interior

Interior Features	ensuite bathroom
Appliances	Dishwasher-Built-In, Dryer, Garage Control, Garage Opener, Washer, Window Coverings, Refrigerators-Two, Stoves-Two
Heating	Forced Air-1, Natural Gas
Stories	2
Has Basement	Yes
Basement	Full, Finished

Exterior

Exterior	Wood
Exterior Features	Fenced, Fruit Trees/Shrubs, Landscaped, Park/Reserve, Picnic Area, Playground Nearby, Public Transportation, Schools, Shopping Nearby, Treed Lot, Vegetable Garden, See Remarks

Roof	Asphalt Shingles
Construction	Wood
Foundation	Concrete Perimeter

School Information

Elementary	Brentwood Elementary
Middle	Sherwood Heights
High	Salisbury Composite

Additional Information

Date Listed	May 2nd, 2025
Days on Market	2
Zoning	Zone 25

DATA IS DEEMED RELIABLE BUT IS NOT GUARANTEED ACCURATE BY THE REALTORS® ASSOCIATION OF EDMONTON. COPYRIGHT 2025 BY THE REALTORS® ASSOCIATION OF EDMONTON. ALL RIGHTS RESERVED. Trademarks are owned or controlled by the Canadian Real Estate Association (CREA) and identify real estate professionals who are members of CREA (REALTOR®, REALTORS®) and/or the quality of services they provide (MLS®, Multiple Listing Service®)

Listing information last updated on May 3rd, 2025 at 10:17pm MDT