

\$630,000 - 9 Courtenay Place, Sherwood Park

MLS® #E4434023

\$630,000

5 Bedroom, 3.00 Bathroom, 1,778 sqft

Single Family on 0.00 Acres

Craigavon, Sherwood Park, AB

Welcome to Craigavon! This rare 1778 sq ft bungalow is still owned by the original owner and is a true gem in the heart of Sherwood Park. Nestled in a mature, neighbourhood, this meticulously maintained home features a formal living and dining room, spacious kitchen with breakfast nook, and a cozy family room featuring Sky lights and a wood-burning fireplace. Three bedrooms on the main, including a large primary with 4pc ensuite, plus a second full bath. The fully finished basement offers two more bedrooms, a huge rec room with gas fireplace, full bathroom, workshop, and loads of storage. Recent upgrades include windows, roof, furnace, hot water tank, central A/C, and fence. Step outside to one of the largest backyards in Sherwood Parkâ€”ideal for your in town homestead, soccer field, or stunning summer oasisâ€”complete with a new composite deck. Just minutes from parks, trails, and F.R. Haythorne Jr. High and Bev Facey High School, this home blends location, size, and updates in one incredible package!

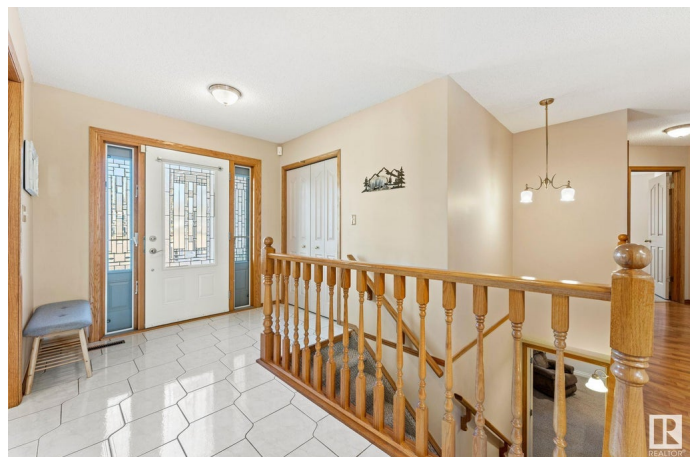
Built in 1988

Essential Information

MLS® # E4434023

Price \$630,000

Bedrooms 5



Bathrooms	3.00
Full Baths	3
Square Footage	1,778
Acres	0.00
Year Built	1988
Type	Single Family
Sub-Type	Detached Single Family
Style	Bungalow
Status	Active

Community Information

Address	9 Courtenay Place
Area	Sherwood Park
Subdivision	Craigavon
City	Sherwood Park
County	ALBERTA
Province	AB
Postal Code	T8A 5K5

Amenities

Amenities	See Remarks
Parking	Double Garage Attached

Interior

Interior Features	ensuite bathroom
Appliances	Air Conditioning-Central, Dishwasher-Built-In, Dryer, Freezer, Garage Control, Garage Opener, Microwave Hood Fan, Refrigerator, Storage Shed, Stove-Electric, Washer, Window Coverings
Heating	Forced Air-1, Natural Gas
Fireplace	Yes
Fireplaces	Tile Surround
Stories	2
Has Basement	Yes
Basement	Full, Finished

Exterior

Exterior	Wood, Vinyl
Exterior Features	Fenced, Flat Site, Landscaped
Roof	Asphalt Shingles

Construction	Wood, Vinyl
Foundation	Concrete Perimeter

Additional Information

Date Listed	May 2nd, 2025
Days on Market	1
Zoning	Zone 25

DATA IS DEEMED RELIABLE BUT IS NOT GUARANTEED ACCURATE BY THE REALTORS® ASSOCIATION OF EDMONTON. COPYRIGHT 2025 BY THE REALTORS® ASSOCIATION OF EDMONTON. ALL RIGHTS RESERVED.Trademarks are owned or controlled by the Canadian Real Estate Association (CREA) and identify real estate professionals who are members of CREA (REALTOR®, REALTORS®) and/or the quality of services they provide (MLS®, Multiple Listing Service®)

Listing information last updated on May 3rd, 2025 at 9:17pm MDT