

\$475,000 - 90 Kingsbury Circle, Spruce Grove

MLS® #E4434190

\$475,000

4 Bedroom, 3.50 Bathroom, 1,707 sqft

Single Family on 0.00 Acres

Kenton, Spruce Grove, AB

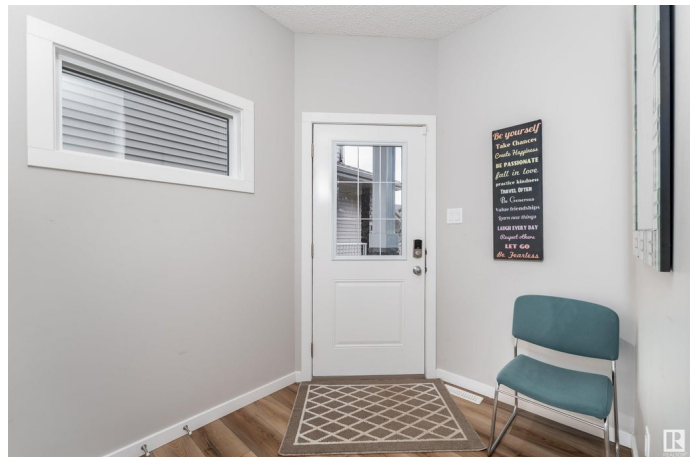
This one is a STUNNER! Welcome to this gorgeous Half Duplex in Kenton. This open concept, modern home was built in 2021 by Bedrock Homes and is waiting for you! This bright & airy duplex features 4 BEDROOMS, 3.5 BATHROOMS, a BONUS ROOM and in the BASEMENT - A SECONDARY LIVING SPACE WITH KITCHEN featuring butcher block countertops. On the main level and upper level youâ€™ll find QUARTZ COUNTERTOPS and modern lighting throughout. The gorgeous white kitchen includes an undermounted sink, STAINLESS STEEL APPLIANCES and a MASSIVE ISLAND. Primary Bedroom includes a large WALK-IN CLOSET and tranquil 4 PIECE ENSUITE. The kitchen, upstairs bedrooms and bonus room are all wired for cable and internet. If all of that wasn't enough, this duplex is SMART HOME CONNECTED: the main floor lighting, thermostat, front door and garage door can all be controlled by your phone! There is shopping very close by and the location is a commuterâ€™s dream: just a short distance to HWY 16. Your new home awaits!

Built in 2021

Essential Information

MLS® #

E4434190



Price	\$475,000
Bedrooms	4
Bathrooms	3.50
Full Baths	3
Half Baths	1
Square Footage	1,707
Acres	0.00
Year Built	2021
Type	Single Family
Sub-Type	Half Duplex
Style	2 Storey
Status	Active

Community Information

Address	90 Kingsbury Circle
Area	Spruce Grove
Subdivision	Kenton
City	Spruce Grove
County	ALBERTA
Province	AB
Postal Code	T7X 0C9

Amenities

Amenities	Ceiling 9 ft., No Animal Home, No Smoking Home, HRV System
Parking	Double Garage Attached

Interior

Interior Features	ensuite bathroom
Appliances	Dishwasher-Built-In, Dryer, Garage Control, Garage Opener, Microwave Hood Fan, Oven-Microwave, Refrigerator, Washer, Window Coverings, Stove-Induction
Heating	Forced Air-1, Natural Gas
Fireplace	Yes
Fireplaces	Insert
Stories	3
Has Basement	Yes
Basement	Full, Finished

Exterior

Exterior	Wood, Stone, Vinyl
Exterior Features	Fenced, Flat Site, Landscaped, Partially Landscaped, Playground Nearby, Schools, Shopping Nearby
Roof	Asphalt Shingles
Construction	Wood, Stone, Vinyl
Foundation	Concrete Perimeter

School Information

Elementary	Brookwood
Middle	Greystone Centennial
High	Spruce Grove Composite

Additional Information

Date Listed	May 2nd, 2025
Days on Market	3
Zoning	Zone 91

DATA IS DEEMED RELIABLE BUT IS NOT GUARANTEED ACCURATE BY THE REALTORS® ASSOCIATION OF EDMONTON. COPYRIGHT 2025 BY THE REALTORS® ASSOCIATION OF EDMONTON. ALL RIGHTS RESERVED.Trademarks are owned or controlled by the Canadian Real Estate Association (CREA) and identify real estate professionals who are members of CREA (REALTOR®, REALTORS®) and/or the quality of services they provide (MLS®, Multiple Listing Service®)

Listing information last updated on May 5th, 2025 at 7:17pm MDT