

\$158,900 - 221 155 Edwards Drive, Edmonton

MLS® #E4437900

\$158,900

1 Bedroom, 1.00 Bathroom, 633 sqft

Condo / Townhouse on 0.00 Acres

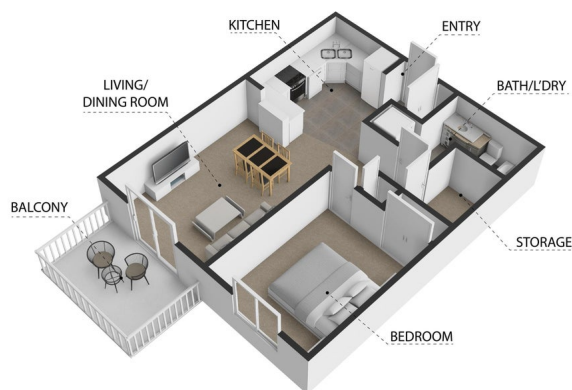
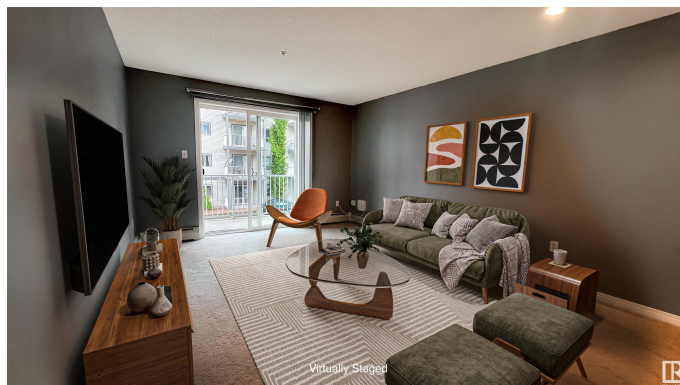
Ellerslie, Edmonton, AB

Welcome to #221 in Park Place Ellerslie Crossing—a well-maintained one-bedroom condo offering comfort, convenience, and great value. The open-concept layout features a spacious kitchen with ample counter space and an eat-up bar, flowing into the bright living room with access to your private balcony through large patio doors. The bedroom is generously sized and fits a king bed with ease. The full bathroom includes in-suite stacked laundry for added convenience. You™ll also appreciate the large in-unit storage room for your extras. This unit comes with one titled underground parking stall, and the building offers a fitness centre and plenty of visitor parking. Ideally located near parks, green space, and a playground, with quick access to shopping, dining, Anthony Henday Drive, and South Edmonton Common. A great opportunity for first-time buyers, downsizers, or investors!

Built in 2005

Essential Information

| | |
|------------|-----------|
| MLS® # | E4437900 |
| Price | \$158,900 |
| Bedrooms | 1 |
| Bathrooms | 1.00 |
| Full Baths | 1 |



155 Edwards Drive SW, Edmonton, AB, T6X 1N6
All dimensions are approximate and should be used as a guide only. Measurements are taken to the center of the room. Measurements of rooms, windows, doors and any other items are approximate and do not constitute a guarantee. The space is for illustrative purposes only and should be used as a guide only by the prospective purchaser.



| | |
|----------------|------------------------|
| Square Footage | 633 |
| Acres | 0.00 |
| Year Built | 2005 |
| Type | Condo / Townhouse |
| Sub-Type | Lowrise Apartment |
| Style | Single Level Apartment |
| Status | Active |

Community Information

| | |
|-------------|-----------------------|
| Address | 221 155 Edwards Drive |
| Area | Edmonton |
| Subdivision | Ellerslie |
| City | Edmonton |
| County | ALBERTA |
| Province | AB |
| Postal Code | T6X 1N6 |

Amenities

| | |
|----------------|--|
| Amenities | Deck, Exercise Room, Parking-Visitor, Security Door, Sprinkler System-Fire |
| Parking Spaces | 1 |
| Parking | Underground |

Interior

| | |
|--------------|---|
| Appliances | Dishwasher-Built-In, Refrigerator, Stacked Washer/Dryer, Stove-Electric |
| Heating | Baseboard, Natural Gas |
| # of Stories | 4 |
| Stories | 1 |
| Has Basement | Yes |
| Basement | None, No Basement |

Exterior

| | |
|-------------------|---|
| Exterior | Wood, Vinyl |
| Exterior Features | Picnic Area, Playground Nearby, Public Transportation, Schools, Shopping Nearby |
| Roof | Asphalt Shingles |
| Construction | Wood, Vinyl |
| Foundation | Concrete Perimeter |

Additional Information

| | |
|----------------|----------------|
| Date Listed | May 22nd, 2025 |
| Days on Market | 41 |
| Zoning | Zone 53 |
| Condo Fee | \$435 |

DATA IS DEEMED RELIABLE BUT IS NOT GUARANTEED ACCURATE BY THE REALTORS® ASSOCIATION OF EDMONTON. COPYRIGHT 2025 BY THE REALTORS® ASSOCIATION OF EDMONTON. ALL RIGHTS RESERVED. Trademarks are owned or controlled by the Canadian Real Estate Association (CREA) and identify real estate professionals who are members of CREA (REALTOR®, REALTORS®) and/or the quality of services they provide (MLS®, Multiple Listing Service®)

Listing information last updated on July 1st, 2025 at 9:32pm MDT