

## \$364,900 - 4420 150 Avenue, Edmonton

MLS® #E4440872

**\$364,900**

5 Bedroom, 2.00 Bathroom, 1,070 sqft

Single Family on 0.00 Acres

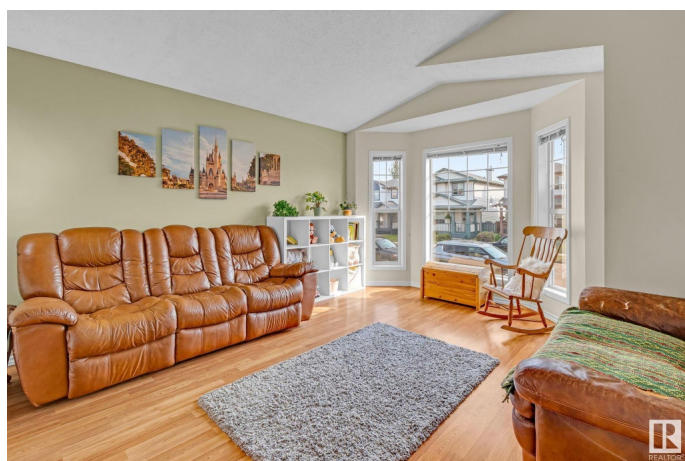
Miller, Edmonton, AB

Super cute family home in quiet area of Edmonton! Great neighbourhood, with many amenities close by, this house is perfect for your growing family! Vaulted ceilings make the main floor feel open and airy! Primary bedroom along with 2 additional bedrooms, eat-in kitchen, and large living room make this a welcoming space for all! The basement has two additional bedrooms, a large family room/den so the kids can have their space too! Easy to clean with laminate flooring throughout! Large fenced yard, with ample parking space in the back, large enough to fit a garage eventually! Great value, in a great neighbourhood- what more could you ask for?

Built in 2002

### Essential Information

MLS® #	E4440872
Price	\$364,900
Bedrooms	5
Bathrooms	2.00
Full Baths	2
Square Footage	1,070
Acres	0.00
Year Built	2002
Type	Single Family
Sub-Type	Detached Single Family



Style	Bi-Level
Status	Active

### Community Information

Address	4420 150 Avenue
Area	Edmonton
Subdivision	Miller
City	Edmonton
County	ALBERTA
Province	AB
Postal Code	T5Y 2Z9

### Amenities

Amenities	On Street Parking, Detectors Smoke, Front Porch, No Animal Home, No Smoking Home, Parking-Extra, Vaulted Ceiling, Vinyl Windows
Parking	No Garage

### Interior

Appliances	Dishwasher-Built-In, Dryer, Refrigerator, Stove-Electric, Washer
Heating	Forced Air-1, Natural Gas
Stories	2
Has Basement	Yes
Basement	Full, Finished

### Exterior

Exterior	Wood, Vinyl
Exterior Features	Back Lane, Cul-De-Sac, Fenced, Flat Site, No Through Road, Paved Lane, Public Transportation, Shopping Nearby
Roof	Asphalt Shingles
Construction	Wood, Vinyl
Foundation	Concrete Perimeter

### Additional Information

Date Listed	June 6th, 2025
Days on Market	2
Zoning	Zone 02

DATA IS DEEMED RELIABLE BUT IS NOT GUARANTEED ACCURATE BY THE REALTORS® ASSOCIATION OF EDMONTON. COPYRIGHT 2025 BY THE REALTORS® ASSOCIATION OF EDMONTON. ALL RIGHTS RESERVED. Trademarks are owned or controlled by the Canadian Real Estate Association (CREA) and identify real estate professionals who are members of CREA (REALTOR®, REALTORS®) and/or the quality of services they

provide (MLS®®, Multiple Listing Service®®)  
Listing information last updated on June 7th, 2025 at 10:47pm MDT