

\$199,900 - 210 Marlborough Place, Edmonton

MLS® #E4441607

\$199,900

2 Bedroom, 1.00 Bathroom, 936 sqft

Condo / Townhouse on 0.00 Acres

Ormsby Place, Edmonton, AB

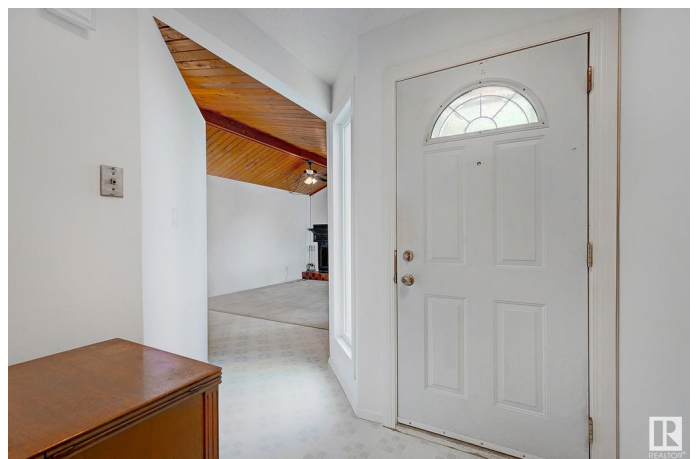
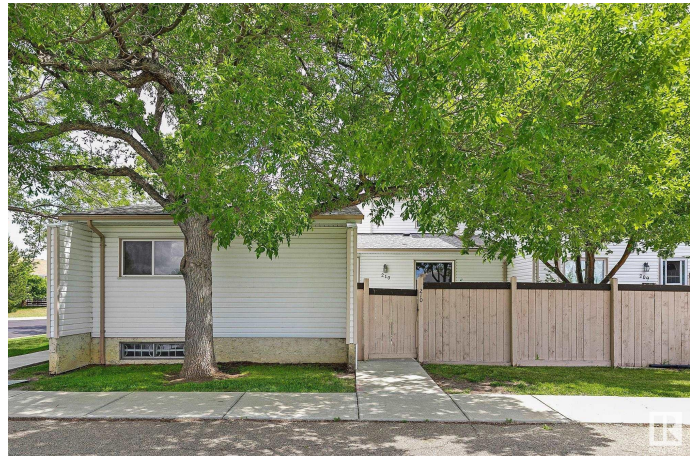
LOVELY END UNIT! ACROSS FROM GREENSPACE! This unique 2 bedroom bungalow style townhouse is a rare find! Blending comfort, convenience & charm! Located walking distance to schools, parks, Jamie Platz YMCA, Lois Hole Library, baseball diamonds, soccer fields, skate park, off leash dog area, Callingwood Square shopping centre & seasonal farmers market. Fresh paint throughout gives this unit a bright, modern feel while preserving the original character. Featuring an open floor plan with vaulted shiplap ceiling & traditional wood burning fireplace. The unfinished basement provides ample storage space with future development potential & an opportunity to add your own personal touches. Enjoy outdoor living in the beautifully landscaped west facing yard that is fully fenced for privacy. Complete with a peaceful sitting bench - perfect for morning coffee or evening relaxation. Comes with 1 energized stall & tons of street parking directly beside the unit. Clean well managed complex. **ALLOWS PETS! HOME SWEET HOME!**

Built in 1977

Essential Information

MLS® # E4441607

Price \$199,900



Bedrooms	2
Bathrooms	1.00
Full Baths	1
Square Footage	936
Acres	0.00
Year Built	1977
Type	Condo / Townhouse
Sub-Type	Townhouse
Style	Bungalow
Status	Active

Community Information

Address	210 Marlborough Place
Area	Edmonton
Subdivision	Ormsby Place
City	Edmonton
County	ALBERTA
Province	AB
Postal Code	T5T 1Y6

Amenities

Amenities	On Street Parking, No Animal Home, Parking-Plug-Ins, Vaulted Ceiling
Parking	Stall

Interior

Appliances	Dryer, Hood Fan, Refrigerator, Stove-Electric, Washer, Window Coverings
Heating	Forced Air-1, Natural Gas
Fireplace	Yes
Fireplaces	Corner, Mantel
Stories	1
Has Basement	Yes
Basement	Full, Unfinished

Exterior

Exterior	Concrete, Vinyl
Exterior Features	Fenced, Landscaped, No Back Lane, Playground Nearby, Public Transportation, Schools, Shopping Nearby
Roof	Asphalt Shingles

Construction	Concrete, Vinyl
Foundation	Concrete Perimeter

Additional Information

Date Listed	June 10th, 2025
Days on Market	7
Zoning	Zone 20
Condo Fee	\$305

DATA IS DEEMED RELIABLE BUT IS NOT GUARANTEED ACCURATE BY THE REALTORS® ASSOCIATION OF EDMONTON. COPYRIGHT 2025 BY THE REALTORS® ASSOCIATION OF EDMONTON. ALL RIGHTS RESERVED.Trademarks are owned or controlled by the Canadian Real Estate Association (CREA) and identify real estate professionals who are members of CREA (REALTOR®, REALTORS®) and/or the quality of services they provide (MLS®, Multiple Listing Service®)

Listing information last updated on June 17th, 2025 at 1:47am MDT