

# **\$199,000 - 7215 7327 South Terwillegar Drive, Edmonton**

MLS® #E4443180

**\$199,000**

2 Bedroom, 2.00 Bathroom, 853 sqft  
Condo / Townhouse on 0.00 Acres

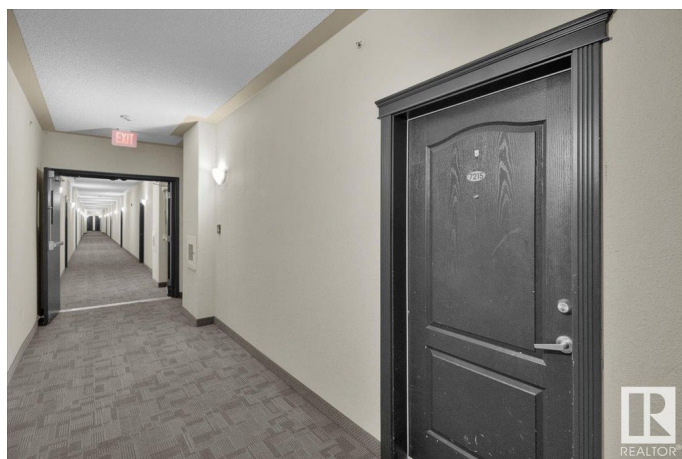
South Terwillegar, Edmonton, AB

Welcome to this beautifully maintained 2-bedroom, 2-bath condo offering a bright & functional layout with stylish finishes & underground heated parking. Perfect for first-time buyers, downsizers, or investors, this east-facing unit provides peaceful views from both the bedrooms & balcony. Enjoy a modern open floor plan with large windows that flood the space with natural light. The kitchen features stainless steel appliances, ample cabinetry, & a rare walk-in pantry. The primary bedroom includes a walk-through closet & private 3-piece ensuite, while the second bedroom is conveniently located next to a full 4-piece bath. Recently painted with brand-new laminate flooring throughout, this home is truly move-in ready. Located in one of the most desirable buildings in the city—steps from Freson Bros, Shoppers, restaurants, parks, top-rated schools, & public transit, with easy access to Anthony Henday. Don't miss this opportunity to live in style & comfort!

Built in 2007

## **Essential Information**

MLS® #	E4443180
Price	\$199,000
Bedrooms	2



Bathrooms	2.00
Full Baths	2
Square Footage	853
Acres	0.00
Year Built	2007
Type	Condo / Townhouse
Sub-Type	Lowrise Apartment
Style	Single Level Apartment
Status	Active

### Community Information

Address	7215 7327 South Terwillegar Drive
Area	Edmonton
Subdivision	South Terwillegar
City	Edmonton
County	ALBERTA
Province	AB
Postal Code	T6R 0L8

### Amenities

Amenities	Deck, Intercom, Parking-Visitor, Storage-In-Suite
Parking	Heated, Parkade, Stall, Underground

### Interior

Interior Features	ensuite bathroom
Appliances	Dishwasher-Built-In, Hood Fan, Oven-Microwave, Refrigerator, Stacked Washer/Dryer, Stove-Electric, Window Coverings
Heating	Baseboard, Natural Gas
# of Stories	4
Stories	1
Has Basement	Yes
Basement	None, No Basement

### Exterior

Exterior	Wood, Stone, Vinyl
Exterior Features	Flat Site, Golf Nearby, Landscaped, Park/Reserve, Playground Nearby, Public Transportation, Schools, Shopping Nearby
Roof	Asphalt Shingles
Construction	Wood, Stone, Vinyl

Foundation                Concrete Perimeter

**School Information**

Elementary                Esther Starkman  
Middle                     Esther Starkman  
High                        Lillian Osborne

**Additional Information**

Date Listed                June 17th, 2025  
Days on Market        3  
Zoning                     Zone 14  
Condo Fee                \$467

DATA IS DEEMED RELIABLE BUT IS NOT GUARANTEED ACCURATE BY THE REALTORS® ASSOCIATION OF EDMONTON. COPYRIGHT 2025 BY THE REALTORS® ASSOCIATION OF EDMONTON. ALL RIGHTS RESERVED.Trademarks are owned or controlled by the Canadian Real Estate Association (CREA) and identify real estate professionals who are members of CREA (REALTOR®, REALTORS®) and/or the quality of services they provide (MLS®, Multiple Listing Service®)  
Listing information last updated on June 20th, 2025 at 2:02am MDT