

\$439,900 - 4015 6 Street, Edmonton

MLS® #E4443852

\$439,900

4 Bedroom, 3.50 Bathroom, 1,346 sqft
Single Family on 0.00 Acres

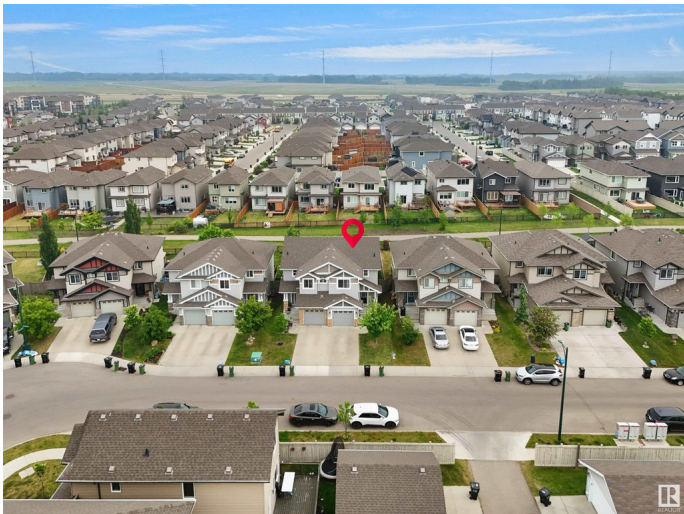
Maple Crest, Edmonton, AB

Welcome to this stunning and well-maintained half duplex BACKING ONTO WALKING TRAIL, nestled in a vibrant community, just minutes away from major amenities including shopping, schools, parks, and public transit. The main floor boasts a bright and airy living space filled with natural light, creating a warm and inviting atmosphere. You'll also find a convenient half washroom perfect for guests. Upstairs features 3 spacious bedrooms with 2 full washrooms. The fully finished basement adds even more living space with an additional bedroom and a full washroom, ideal for guests or extended family with the second kitchen. Enjoy outdoor living in the beautifully maintained backyard, complete with a large deck perfect for entertaining. This home is a perfect blend of comfort, style, and functionality.

Built in 2013

Essential Information

MLS® #	E4443852
Price	\$439,900
Bedrooms	4
Bathrooms	3.50
Full Baths	3
Half Baths	1
Square Footage	1,346



Acres	0.00
Year Built	2013
Type	Single Family
Sub-Type	Half Duplex
Style	2 Storey
Status	Active

Community Information

Address	4015 6 Street
Area	Edmonton
Subdivision	Maple Crest
City	Edmonton
County	ALBERTA
Province	AB
Postal Code	T6T 0T5

Amenities

Amenities	No Animal Home, No Smoking Home
Parking Spaces	2
Parking	Single Garage Attached

Interior

Interior Features	ensuite bathroom
Appliances	Dishwasher-Built-In, Dryer, Garage Opener, Stove-Electric, Washer, Refrigerators-Two, Microwave Hood Fan-Two
Heating	Forced Air-1, Natural Gas
Stories	2
Has Basement	Yes
Basement	Full, Finished

Exterior

Exterior	Wood, Asphalt
Exterior Features	Playground Nearby, Public Transportation, Schools, Shopping Nearby
Roof	Asphalt Shingles
Construction	Wood, Asphalt
Foundation	Concrete Perimeter

Additional Information

Date Listed	June 23rd, 2025
-------------	-----------------

Days on Market 8

Zoning Zone 30

DATA IS DEEMED RELIABLE BUT IS NOT GUARANTEED ACCURATE BY THE REALTORS® ASSOCIATION OF EDMONTON. COPYRIGHT 2025 BY THE REALTORS® ASSOCIATION OF EDMONTON. ALL RIGHTS RESERVED. Trademarks are owned or controlled by the Canadian Real Estate Association (CREA) and identify real estate professionals who are members of CREA (REALTOR®, REALTORS®) and/or the quality of services they provide (MLS®, Multiple Listing Service®)

Listing information last updated on July 1st, 2025 at 1:33pm MDT