

\$399,000 - 120 Springwood Way, Spruce Grove

MLS® #E4444025

\$399,000

3 Bedroom, 2.50 Bathroom, 1,510 sqft

Single Family on 0.00 Acres

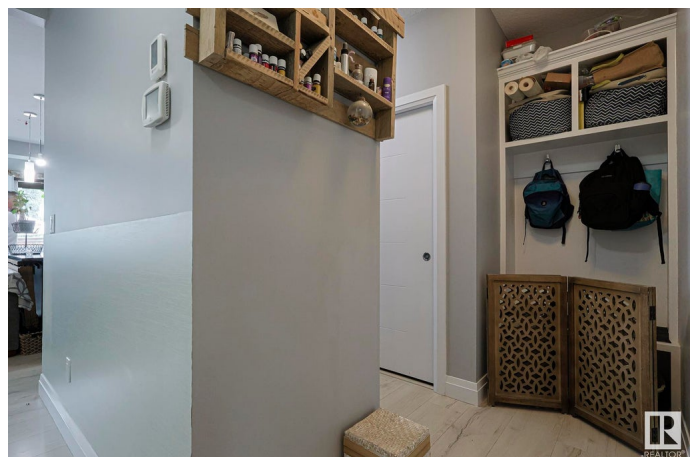
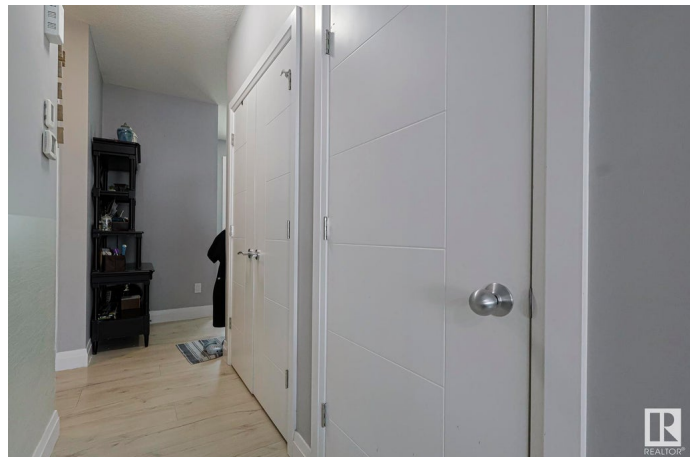
Spruce Ridge, Spruce Grove, AB

2014 Cormac model by Alquinn Homes, perfectly situated in Spruce Grove, a community designed for families! This 1510 sqft home truly maximizes every inch of space with its functional plan and contemporary layout. Featuring 9' California knock-down ceilings, this home HAS an open-concept great room & dining room, while the kitchen offers floor-to-ceiling cabinetry with a center island and butler's pantry – ideal for busy family life and entertaining. The top floor boasts a large flex room, perfect for a study or home office, dedicated upstairs laundry, and three spacious bedrooms, including a king-sized master with a generous walk-in closet and 4-piece ensuite. Beyond the home's fantastic features, Spruce Grove offers an abundance of family-friendly amenities. You'll HAVE EASY ACCESS to the Tri-Leisure Centre, and close to a variety of shopping and dining experiences. This home offering peace of mind in a community that truly supports a vibrant family lifestyle.

Built in 2014

Essential Information

MLS® #	E4444025
Price	\$399,000
Bedrooms	3



Bathrooms	2.50
Full Baths	2
Half Baths	1
Square Footage	1,510
Acres	0.00
Year Built	2014
Type	Single Family
Sub-Type	Half Duplex
Style	2 Storey
Status	Active

Community Information

Address	120 Springwood Way
Area	Spruce Grove
Subdivision	Spruce Ridge
City	Spruce Grove
County	ALBERTA
Province	AB
Postal Code	T7X 0S7

Amenities

Amenities	Deck, Vinyl Windows, 9 ft. Basement Ceiling
Parking	Single Garage Attached

Interior

Interior Features	ensuite bathroom
Appliances	Air Conditioning-Central, Dishwasher-Built-In, Dryer, Garage Control, Garage Opener, Microwave Hood Fan, Refrigerator, Stove-Electric, Washer, Window Coverings, See Remarks
Heating	Forced Air-1, Natural Gas
Stories	2
Has Basement	Yes
Basement	Full, Unfinished

Exterior

Exterior	Wood, Stone, Vinyl
Exterior Features	Fenced, Landscaped, Playground Nearby, Public Swimming Pool, Public Transportation, Schools, Shopping Nearby
Roof	Asphalt Shingles

Construction	Wood, Stone, Vinyl
Foundation	Concrete Perimeter

Additional Information

Date Listed	June 24th, 2025
Days on Market	14
Zoning	Zone 91

DATA IS DEEMED RELIABLE BUT IS NOT GUARANTEED ACCURATE BY THE REALTORS® ASSOCIATION OF EDMONTON. COPYRIGHT 2025 BY THE REALTORS® ASSOCIATION OF EDMONTON. ALL RIGHTS RESERVED.Trademarks are owned or controlled by the Canadian Real Estate Association (CREA) and identify real estate professionals who are members of CREA (REALTOR®, REALTORS®) and/or the quality of services they provide (MLS®, Multiple Listing Service®)

Listing information last updated on July 8th, 2025 at 2:02pm MDT