

# **\$369,998 - 5134 River's Edge Way, Edmonton**

MLS® #E4444349

**\$369,998**

2 Bedroom, 2.50 Bathroom, 1,098 sqft

Single Family on 0.00 Acres

River's Edge, Edmonton, AB

**NO CONDO FEES and AMAZING VALUE!**

You read that right. Welcome to this brand new townhouse unit, the Gabriel, built by StreetSide Developments. Located in the newest premier west end community of River's Edge, this home is almost 1100 square feet and comes with front yard landscaping and a single oversized attached garage. A perfect opportunity for a young family or downsizers to get into a new home! Your main floor is complete with upgrade luxury vinyl plank flooring throughout the great room and the kitchen. The main entrance/main floor has a large sized foyer with a 2 piece bathroom and an office / bedroom. Highlighted in your new kitchen are upgraded cabinets, upgraded counter tops and a tile back splash. The upper level has 2 bedrooms and 2 full bathrooms. \*\*\* This home is under construction and the photos used are of the show home, the colors and finishings may vary. \*\*\* Slated to be completed by September\*\*\*

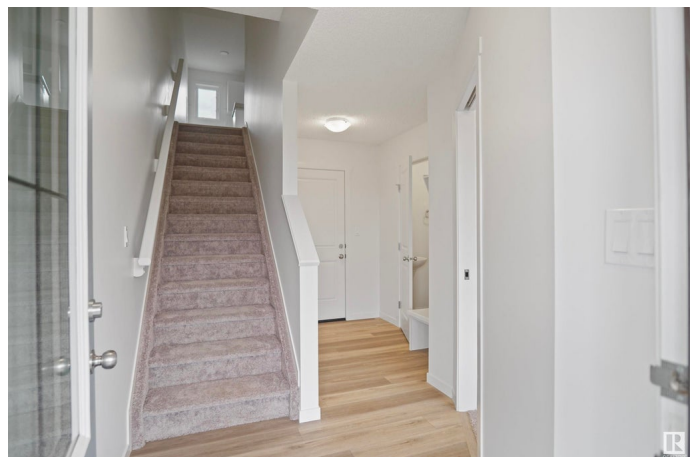
Built in 2025

## **Essential Information**

MLS® # E4444349

Price \$369,998

Bedrooms 2



|                |                      |
|----------------|----------------------|
| Bathrooms      | 2.50                 |
| Full Baths     | 2                    |
| Half Baths     | 1                    |
| Square Footage | 1,098                |
| Acres          | 0.00                 |
| Year Built     | 2025                 |
| Type           | Single Family        |
| Sub-Type       | Residential Attached |
| Style          | 2 Storey             |
| Status         | Active               |

### Community Information

|             |                       |
|-------------|-----------------------|
| Address     | 5134 River's Edge Way |
| Area        | Edmonton              |
| Subdivision | River's Edge          |
| City        | Edmonton              |
| County      | ALBERTA               |
| Province    | AB                    |
| Postal Code | T6M 3B5               |

### Amenities

|           |                                    |
|-----------|------------------------------------|
| Amenities | See Remarks                        |
| Parking   | Over Sized, Single Garage Attached |

### Interior

|                   |  |
|-------------------|--|
| Interior Features | ensuite bathroom                           |
| Appliances        | Garage Control, Garage Opener, See Remarks |
| Heating           | Forced Air-1, Natural Gas                  |
| Stories           | 3  |
| Has Basement      | Yes  |
| Basement          | None, No Basement                          |

### Exterior

|                   |  |
|-------------------|--|
| Exterior          | Wood, Stone, Vinyl   |
| Exterior Features | Airport Nearby, Fenced, Landscaped, Park/Reserve, Playground Nearby, Public Swimming Pool, Public Transportation, Schools, Shopping Nearby |
| Roof              | Asphalt Shingles   |
| Construction      | Wood, Stone, Vinyl   |

Foundation                      Concrete Perimeter

**Additional Information**

Date Listed                      June 24th, 2025

Days on Market                32

Zoning                            Zone 57

DATA IS DEEMED RELIABLE BUT IS NOT GUARANTEED ACCURATE BY THE REALTORS® ASSOCIATION OF EDMONTON. COPYRIGHT 2025 BY THE REALTORS® ASSOCIATION OF EDMONTON. ALL RIGHTS RESERVED.Trademarks are owned or controlled by the Canadian Real Estate Association (CREA) and identify real estate professionals who are members of CREA (REALTOR®, REALTORS®) and/or the quality of services they provide (MLS®, Multiple Listing Service®)

Listing information last updated on July 26th, 2025 at 4:02am MDT