

# \$549,000 - 11 Labelle Crescent, St. Albert

MLS® #E4445823

**\$549,000**

6 Bedroom, 3.00 Bathroom, 1,207 sqft  
Single Family on 0.00 Acres

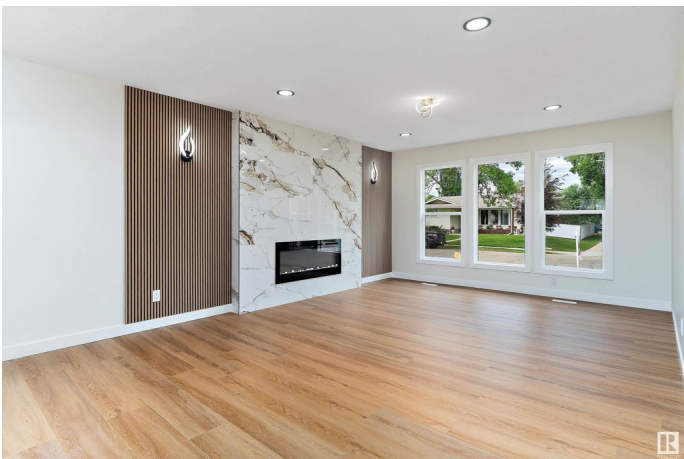
Lacombe Park, St. Albert, AB

Welcome to this stunning single-family home, fully renovated from top to bottom in the heart of St. Albert. Boasting 6 Bedrooms, 3 full bathrooms, and 2 modern kitchens with Brand new appliances, this home offers the perfect blend of style, space, and convenience. Every detail has been updated – including new windows, new siding, new plumbing, new electrical, Fully Landscaped, stylish feature wall with modern electric fireplace, and modern finishes throughout. Don't forget new double detached garage, plus a concrete pad with parking for 5 additional vehicles. Located in a prime location, close to schools, shopping, transit, and all major amenities, this move-in-ready home offers both comfort and exceptional value. A rare find in one of St. Albert's most desirable areas!

Built in 1974

## Essential Information

MLS® #	E4445823
Price	\$549,000
Bedrooms	6
Bathrooms	3.00
Full Baths	3
Square Footage	1,207
Acres	0.00
Year Built	1974



Type	Single Family
Sub-Type	Detached Single Family
Style	Bungalow
Status	Active

### Community Information

Address	11 Labelle Crescent
Area	St. Albert
Subdivision	Lacombe Park
City	St. Albert
County	ALBERTA
Province	AB
Postal Code	T8N 2G6

### Amenities

Amenities	Detectors Smoke, No Animal Home, No Smoking Home, Parking-Extra, See Remarks
Parking	Double Garage Detached

### Interior

Interior Features	ensuite bathroom
Appliances	Dishwasher-Built-In, Dryer, Garage Opener, Microwave Hood Fan, Washer, Refrigerators-Two, Stoves-Two, Dishwasher-Two
Heating	Forced Air-1, Natural Gas
Stories	2
Has Suite	Yes
Has Basement	Yes
Basement	Full, Finished

### Exterior

Exterior	Wood, Vinyl
Exterior Features	Fenced, Flat Site, Golf Nearby, Landscaped, No Back Lane, Playground Nearby, See Remarks
Roof	Asphalt Shingles
Construction	Wood, Vinyl
Foundation	Concrete Perimeter

### Additional Information

Date Listed	July 4th, 2025
Days on Market	7

## Zoning

## Zone 24

DATA IS DEEMED RELIABLE BUT IS NOT GUARANTEED ACCURATE BY THE REALTORS® ASSOCIATION OF EDMONTON. COPYRIGHT 2025 BY THE REALTORS® ASSOCIATION OF EDMONTON. ALL RIGHTS RESERVED. Trademarks are owned or controlled by the Canadian Real Estate Association (CREA) and identify real estate professionals who are members of CREA (REALTOR®, REALTORS®) and/or the quality of services they provide (MLS®, Multiple Listing Service®)

Listing information last updated on July 11th, 2025 at 6:17am MDT