

\$194,900 - 313 13111 140 Avenue, Edmonton

MLS® #E4446116

\$194,900

2 Bedroom, 2.00 Bathroom, 863 sqft

Condo / Townhouse on 0.00 Acres

Pembina, Edmonton, AB

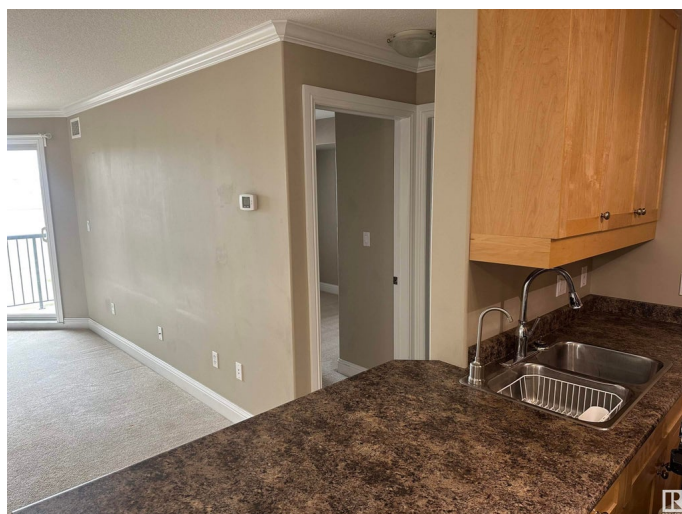
Palisades Park Villas third floor fully Air Conditioned unit with 2 bedrooms and 2 full baths. Kitchen features maple cabinets and black appliances. The Primary Bedroom is a good size and has a walk in closet as well as a full ensuite including tub and shower. Step out onto the west facing deck with natural gas for your BBQ. Includes One heated underground parking stall with a storage cage. Plenty of stores nearby and not far from the Anthony Henday and Yellowhead.

Built in 2006

Essential Information

MLS® #	E4446116
Price	\$194,900
Bedrooms	2
Bathrooms	2.00
Full Baths	2
Square Footage	863
Acres	0.00
Year Built	2006
Type	Condo / Townhouse
Sub-Type	Lowrise Apartment
Style	Single Level Apartment
Status	Active

Community Information



Address	313 13111 140 Avenue
Area	Edmonton
Subdivision	Pembina
City	Edmonton
County	ALBERTA
Province	AB
Postal Code	T6V 0B1

Amenities

Amenities	Deck, Detectors Smoke, Parking-Visitor, Security Door, Storage Cage
Parking Spaces	1
Parking	Heated, Underground

Interior

Interior Features	ensuite bathroom
Appliances	Air Conditioning-Central, Dishwasher-Built-In, Oven-Microwave, Refrigerator, Stacked Washer/Dryer, Stove-Electric, Window Coverings
Heating	Fan Coil, Natural Gas
# of Stories	4
Stories	1
Has Basement	Yes
Basement	None, No Basement

Exterior

Exterior	Wood, Stucco
Exterior Features	Public Transportation, Shopping Nearby
Roof	Asphalt Shingles
Construction	Wood, Stucco
Foundation	Concrete Perimeter

Additional Information

Date Listed	July 5th, 2025
Days on Market	3
Zoning	Zone 27
Condo Fee	\$437

DATA IS DEEMED RELIABLE BUT IS NOT GUARANTEED ACCURATE BY THE REALTORS® ASSOCIATION OF EDMONTON. COPYRIGHT 2025 BY THE REALTORS® ASSOCIATION OF EDMONTON. ALL RIGHTS RESERVED. Trademarks are owned or controlled by the Canadian Real Estate Association (CREA) and identify real estate professionals who are members of CREA (REALTOR®, REALTORS®) and/or the quality of services they provide (MLS®, Multiple Listing Service®)

Listing information last updated on July 8th, 2025 at 3:47pm MDT