

## **\$529,900 - 1274 Sandstone Boulevard, Sherwood Park**

---

MLS® #E4446916

**\$529,900**

4 Bedroom, 3.50 Bathroom, 1,468 sqft

Single Family on 0.00 Acres

Summerwood, Sherwood Park, AB

Beautiful 4-Bedroom Home with Stunning Finishes & Basement Retreat. This gorgeous home features 9 ft ceilings, a spacious living room with large bright windows, and a beautiful white kitchen with quartz counters. The main floor offers a flowing layout with a spacious dining room - ideal for hosting and family gatherings. Upstairs, you'll find a generous bonus room, convenient upstairs laundry, and a large primary suite with a spa-like ensuite. The fully finished basement includes a large family room, fourth bedroom, and a luxurious 4-piece bath—perfect for guests or a private office. Enjoy year-round comfort with central A/C, Gemstone exterior lighting, and exceptional outdoor space featuring a beautifully landscaped yard, sunny play-area, and a stone patio for summer relaxation. The concrete double detached garage adds extra durability and functionality. Every detail in this home blends comfort, style, and thoughtful design—truly a must-see!

Built in 2020

### **Essential Information**

MLS® #	E4446916
Price	\$529,900
Bedrooms	4
Bathrooms	3.50



Full Baths	3
Half Baths	1
Square Footage	1,468
Acres	0.00
Year Built	2020
Type	Single Family
Sub-Type	Detached Single Family
Style	2 Storey
Status	Active

### Community Information

Address	1274 Sandstone Boulevard
Area	Sherwood Park
Subdivision	Summerwood
City	Sherwood Park
County	ALBERTA
Province	AB
Postal Code	T8H 1B2

### Amenities

Amenities	Deck, No Animal Home, No Smoking Home
Parking	Double Garage Detached

### Interior

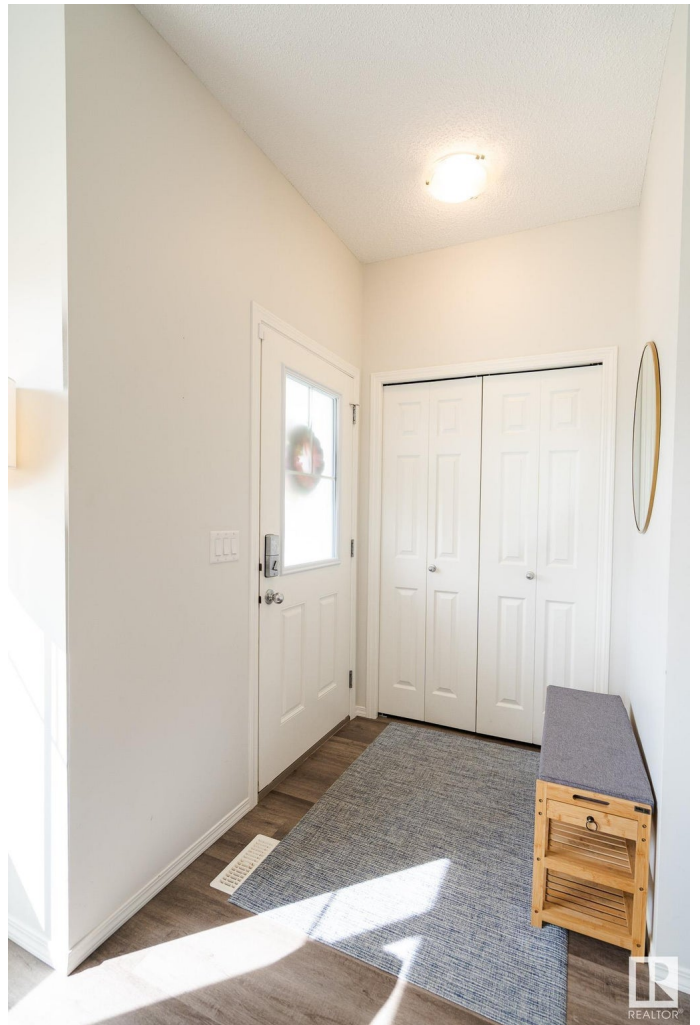
Interior Features	ensuite bathroom
Appliances	Dishwasher-Built-In, Dryer, Microwave Hood Fan, Refrigerator, Stove-Electric, Washer, Window Coverings
Heating	Forced Air-1, Natural Gas
Stories	2
Has Basement	Yes
Basement	Full, Finished

### Exterior

Exterior	Wood, Brick, Vinyl
Exterior Features	Back Lane, Fenced, Golf Nearby, Landscaped, Playground Nearby, Public Transportation, Schools, Shopping Nearby
Roof	Asphalt Shingles
Construction	Wood, Brick, Vinyl
Foundation	Concrete Perimeter

## Additional Information

Date Listed	July 10th, 2025
Days on Market	10
Zoning	Zone 25



DATA IS DEEMED RELIABLE BUT IS NOT GUARANTEED ACCURATE BY THE REALTORS® ASSOCIATION OF EDMONTON. COPYRIGHT 2025 BY THE REALTORS® ASSOCIATION OF EDMONTON. ALL RIGHTS RESERVED. Trademarks are owned or controlled by the Canadian Real Estate Association (CREA) and identify real estate professionals who are members of CREA (REALTOR®, REALTORS®) and/or the quality of services they provide (MLS®, Multiple Listing Service®)

Listing information last updated on July 20th, 2025 at 8:17am MDT