

## \$529,900 - 26a Rosewood Drive, Sherwood Park

MLS® #E4447215

**\$529,900**

4 Bedroom, 2.00 Bathroom, 1,122 sqft

Single Family on 0.00 Acres

Maplewood (Sherwood Park), Sherwood Park, AB

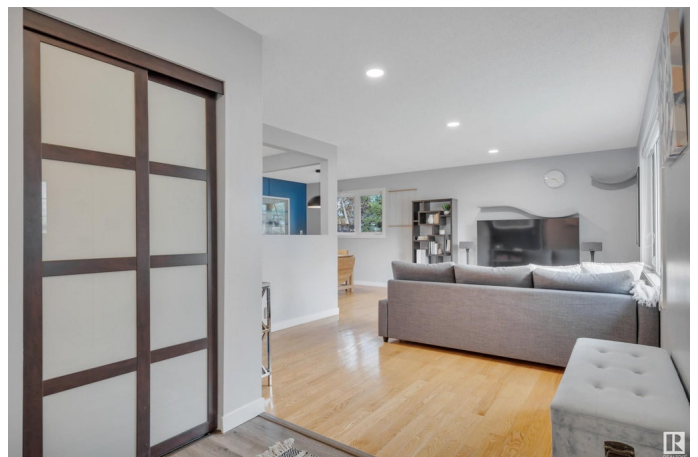
Bright, beautiful and extensively renovated in desirable Maplewood! This gorgeous bungalow boasts an open kitchen with white shaker cabinetry, expansive QUARTZ counters, glass subway backsplash and stainless appliances. The main bath has been fully renovated with tile surround and HEATED TILE FLOORS! The back entry leads to a fully separate kitchen, living room, 2nd laundry room, 3 pc bath and fully insulated bedroom with beautiful pine ceilings. Enjoy the spacious back deck with integrated lighting, large patio and ample size yard. Plus! There is a INSULATED AND HEATED DBL garage and additional parking pad. NUMEROUS UPGRADES over the years include: Windows, roof, eaves, A/C, HE furnace, HWT, kitchen, main bath, flooring (NO CARPET!), paint, trim, lighting, fixtures, attic insulation, deck, fence, electrical panel, and back-flow valve. This amazing location is close to schools, parks, amenities...you can even walk the tree lined street to Roasti coffee- only a few hundred meters away!

Built in 1972

### Essential Information

MLS® # E4447215

Price \$529,900



|                |                        |
|----------------|------------------------|
| Bedrooms       | 4                      |
| Bathrooms      | 2.00                   |
| Full Baths     | 2                      |
| Square Footage | 1,122                  |
| Acres          | 0.00                   |
| Year Built     | 1972                   |
| Type           | Single Family          |
| Sub-Type       | Detached Single Family |
| Style          | Bungalow               |
| Status         | Active                 |

### **Community Information**

|             |                           |
|-------------|---------------------------|
| Address     | 26a Rosewood Drive        |
| Area        | Sherwood Park             |
| Subdivision | Maplewood (Sherwood Park) |
| City        | Sherwood Park             |
| County      | ALBERTA                   |
| Province    | AB                        |
| Postal Code | T8A 2H3                   |

### **Amenities**

|                |  |
|----------------|--|
| Amenities      | Air Conditioner, Deck, No Smoking Home, Parking-Extra, Vinyl Windows |
| Parking Spaces | 4  |
| Parking        | Double Garage Detached   |

### **Interior**

|              |   |
|--------------|---|
| Appliances   | Air Conditioning-Central, Garage Control, Garage Opener, Hood Fan, Vacuum System Attachments, Vacuum Systems, Window Coverings, Dryer-Two, Refrigerators-Two, Stoves-Two, Washers-Two, Dishwasher-Two |
| Heating      | Forced Air-1, Natural Gas   |
| Stories      | 2   |
| Has Suite    | Yes   |
| Has Basement | Yes   |
| Basement     | Full, Finished  |

### **Exterior**

|                   |   |
|-------------------|---|
| Exterior          | Wood, Stucco  |
| Exterior Features | Fenced, Landscaped, Park/Reserve, Picnic Area, Playground Nearby, |

Public Transportation, Schools, Shopping Nearby

|              |                    |
|--------------|--------------------|
| Roof         | Asphalt Shingles   |
| Construction | Wood, Stucco       |
| Foundation   | Concrete Perimeter |

**School Information**

|            |                          |
|------------|--------------------------|
| Elementary | Brentwood Elementary     |
| Middle     | Sherwood Heights Jr High |
| High       | Salisbury Composite      |

**Additional Information**

|                |                 |
|----------------|-----------------|
| Date Listed    | July 11th, 2025 |
| Days on Market | 1               |
| Zoning         | Zone 25         |

DATA IS DEEMED RELIABLE BUT IS NOT GUARANTEED ACCURATE BY THE REALTORS® ASSOCIATION OF EDMONTON. COPYRIGHT 2025 BY THE REALTORS® ASSOCIATION OF EDMONTON. ALL RIGHTS RESERVED.Trademarks are owned or controlled by the Canadian Real Estate Association (CREA) and identify real estate professionals who are members of CREA (REALTOR®, REALTORS®) and/or the quality of services they provide (MLS®, Multiple Listing Service®)

Listing information last updated on July 12th, 2025 at 8:47am MDT