

\$579,000 - 4051 120 Street, Edmonton

MLS® #E4448643

\$579,000

4 Bedroom, 2.50 Bathroom, 1,408 sqft

Single Family on 0.00 Acres

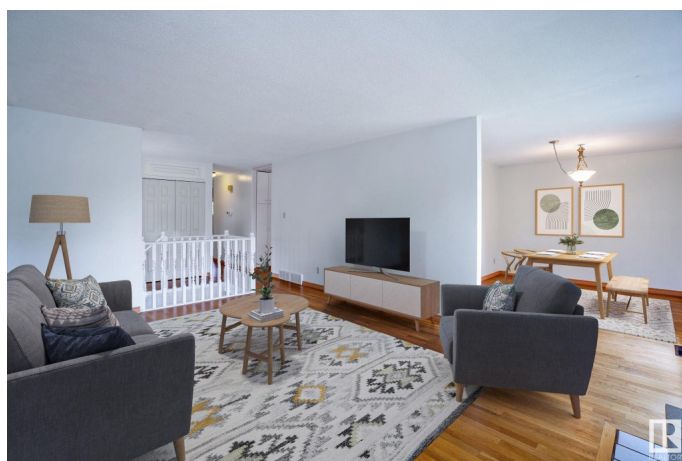
Aspen Gardens, Edmonton, AB

Nestled in one of Edmonton's most desirable communities, Aspen Gardens, this 1,407 sq ft bungalow sits on a spacious 716 sq m lot and is bursting with potential. Featuring 4 main-floor bedrooms plus a basement den with a closet that could be converted to a 5th bedroom. Bathrooms on both levels, and generous living, dining, and rec spaces make it ideal for family living. With ample storage and solid construction, they truly don't build them like this anymore. Enjoy an oversized, heated, and insulated double garage, no shortage of parking or workspace. Surrounded by parks, community leagues, playgrounds, and reputable elementary and junior high schools. The Derrick Golf and Winter Club and Whitemud Creek's scenic multi-use trails are less than a 4-minute drive away. Move in, update, and make it your own. Don't miss this chance to live in sought-after Aspen Gardens!

Built in 1966

Essential Information

MLS® #	E4448643
Price	\$579,000
Bedrooms	4
Bathrooms	2.50
Full Baths	2



Half Baths	1
Square Footage	1,408
Acres	0.00
Year Built	1966
Type	Single Family
Sub-Type	Detached Single Family
Style	Bungalow
Status	Active

Community Information

Address	4051 120 Street
Area	Edmonton
Subdivision	Aspen Gardens
City	Edmonton
County	ALBERTA
Province	AB
Postal Code	T6J 1X7

Amenities

Amenities	Front Porch, Gazebo, No Animal Home, No Smoking Home, Vinyl Windows
Parking	Double Garage Detached, Heated, Insulated, Over Sized

Interior

Interior Features	ensuite bathroom
Appliances	Dryer, Garage Control, Garage Opener, Refrigerator, Storage Shed, Stove-Electric, Washer, Water Softener, Window Coverings
Heating	Forced Air-1, Natural Gas
Fireplace	Yes
Fireplaces	Tile Surround
Stories	2
Has Basement	Yes
Basement	Full, Finished

Exterior

Exterior	Wood, Brick
Exterior Features	Fruit Trees/Shrubs, Golf Nearby, Playground Nearby, Public Transportation, Schools, See Remarks
Roof	Asphalt Shingles

Construction	Wood, Brick
Foundation	Concrete Perimeter

Additional Information

Date Listed	July 18th, 2025
Days on Market	1
Zoning	Zone 16

DATA IS DEEMED RELIABLE BUT IS NOT GUARANTEED ACCURATE BY THE REALTORS® ASSOCIATION OF EDMONTON. COPYRIGHT 2025 BY THE REALTORS® ASSOCIATION OF EDMONTON. ALL RIGHTS RESERVED.Trademarks are owned or controlled by the Canadian Real Estate Association (CREA) and identify real estate professionals who are members of CREA (REALTOR®, REALTORS®) and/or the quality of services they provide (MLS®, Multiple Listing Service®)

Listing information last updated on July 19th, 2025 at 5:17am MDT