

\$122,500 - 1104 9917 110 Street, Edmonton

MLS® #E4450517

\$122,500

1 Bedroom, 1.00 Bathroom, 544 sqft

Condo / Townhouse on 0.00 Acres

W&hkw&ntwin, Edmonton, AB

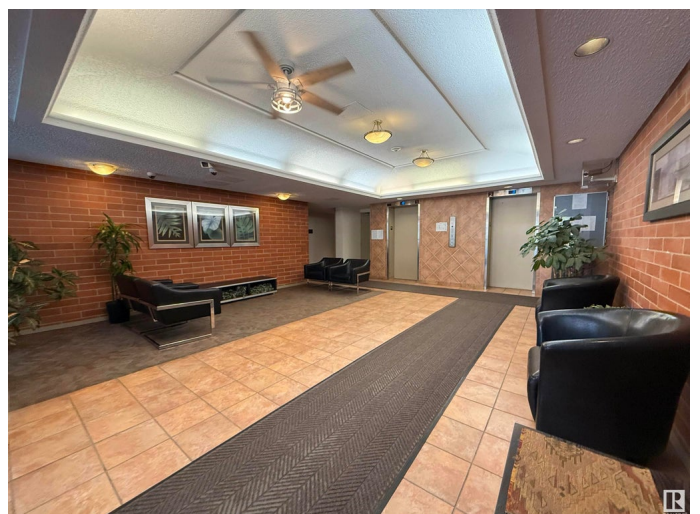
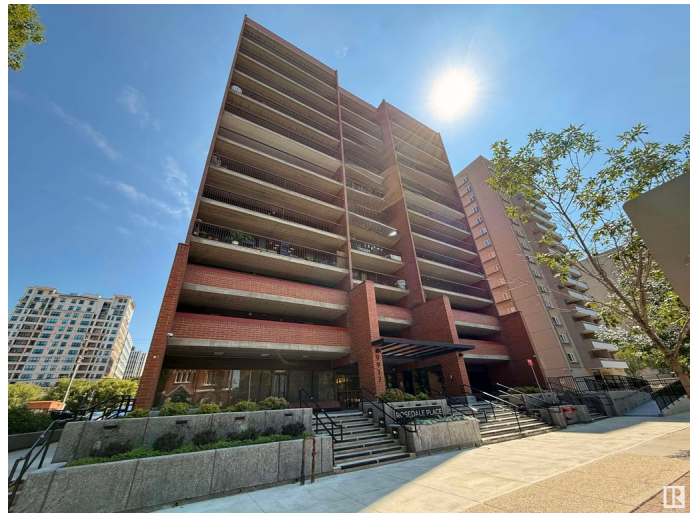
ATTENTION! Young professionals and students. Don't miss out on this quaint 1 bedroom apartment condo boasting an amazing unobstructed 11th floor view overlooking the quiet streetscape of Oliver and West Edmonton. Rosedale Place is situated on the fringe of the downtown core with the added convenience of the Grandin LRT station providing easy access to Grant McEwan & U of A; bike paths for the eco-friendly commuter... in addition to the many river valley amenities ! This 545sq.ft. unit features updated kitchen cabinetry w/ stainless appliances; engineered plank style flooring & slate tile; 4 pc. bath w/ glass vessel sink; insuite laundry w/ storage room; massive west face balcony, and heated underground parking. Building amenities include an inviting lobby area, main floor social room, exercise room w/ sauna... and condo fees that include heat, water & POWER! An added bonus is this is a "PET FRIENDLY" building! IMMEDIATE POSSESSION available. SIMPLY PUT...GREAT VALUE!

Built in 1981

Essential Information

MLS® # E4450517

Price \$122,500



Bedrooms	1
Bathrooms	1.00
Full Baths	1
Square Footage	544
Acres	0.00
Year Built	1981
Type	Condo / Townhouse
Sub-Type	Apartment High Rise
Style	Single Level Apartment
Status	Active

Community Information

Address	1104 9917 110 Street
Area	Edmonton
Subdivision	W™hkw”win
City	Edmonton
County	ALBERTA
Province	AB
Postal Code	T5K 2N4

Amenities

Amenities	Exercise Room, Parking-Visitor, Patio, Sauna; Swirlpool; Steam, Secured Parking, Security Door, Social Rooms
Parking Spaces	1
Parking	Heated, Underground

Interior

Appliances	Dishwasher-Built-In, Dryer, Garage Opener, Microwave Hood Fan, Refrigerator, Stove-Electric, Washer
Heating	Hot Water, Natural Gas
# of Stories	13
Stories	1
Has Basement	Yes
Basement	None, No Basement

Exterior

Exterior	Concrete, Brick
Exterior Features	Public Transportation, Shopping Nearby, View City
Roof	Tar & Gravel

Construction	Concrete, Brick
Foundation	Concrete Perimeter

Additional Information

Date Listed	July 31st, 2025
Days on Market	2
Zoning	Zone 12
Condo Fee	\$571

DATA IS DEEMED RELIABLE BUT IS NOT GUARANTEED ACCURATE BY THE REALTORS® ASSOCIATION OF EDMONTON. COPYRIGHT 2025 BY THE REALTORS® ASSOCIATION OF EDMONTON. ALL RIGHTS RESERVED.Trademarks are owned or controlled by the Canadian Real Estate Association (CREA) and identify real estate professionals who are members of CREA (REALTOR®, REALTORS®) and/or the quality of services they provide (MLS®, Multiple Listing Service®)

Listing information last updated on August 2nd, 2025 at 3:17am MDT