

Courtesy Of David Lofthaug Of Bode

## \$599,900 - 282 Lodge Pole Place, Leduc

MLS® #E4452406

**\$599,900**

4 Bedroom, 2.50 Bathroom, 1,936 sqft  
Single Family on 0.00 Acres

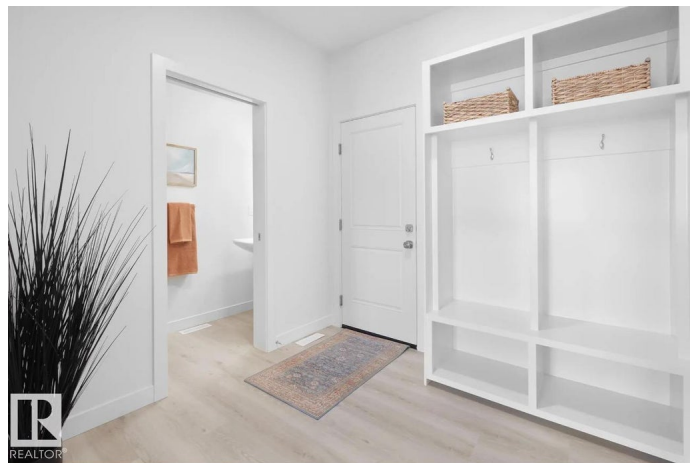
Woodbend, Leduc, AB

The Aera model offers 1,936 sq ft with 3 bedrooms, 2.5 bathrooms, and a versatile bonus room, creating the perfect balance of comfort and function. Built on a 9-foot foundation with a side entrance, this home offers future development potential and layout flexibility. The open-concept main floor enhances flow between living, dining, and kitchen spaces, ideal for both everyday life and entertaining. Located in the welcoming Woodbend community, with access to green spaces, trails, and local amenities. Photos are representative.

Built in 2025

### Essential Information

MLS® #	E4452406
Price	\$599,900
Bedrooms	4
Bathrooms	2.50
Full Baths	2
Half Baths	1
Square Footage	1,936
Acres	0.00
Year Built	2025
Type	Single Family
Sub-Type	Detached Single Family
Style	2 Storey



Status Active

### Community Information

Address 282 Lodge Pole Place  
Area Leduc  
Subdivision Woodbend  
City Leduc  
County ALBERTA  
Province AB  
Postal Code T5Y 4M2

### Amenities

Amenities No Animal Home, No Smoking Home  
Parking Spaces 4  
Parking Double Garage Attached

### Interior

Interior Features ensuite bathroom  
Appliances None  
Heating Forced Air-1, Natural Gas  
Fireplace Yes  
Fireplaces Insert  
Stories 2  
Has Basement Yes  
Basement Full, Unfinished

### Exterior

Exterior Wood, Stone, Vinyl  
Exterior Features Level Land, Low Maintenance Landscape, Park/Reserve, Public Transportation, Schools, Shopping Nearby  
Roof Asphalt Shingles  
Construction Wood, Stone, Vinyl  
Foundation Concrete Perimeter

### Additional Information

Date Listed August 11th, 2025  
Days on Market 28  
Zoning Zone 81

DATA IS DEEMED RELIABLE BUT IS NOT GUARANTEED ACCURATE BY THE REALTORS® ASSOCIATION OF

EDMONTON. COPYRIGHT 2025 BY THE REALTORS® ASSOCIATION OF EDMONTON. ALL RIGHTS RESERVED. Trademarks are owned or controlled by the Canadian Real Estate Association (CREA) and identify real estate professionals who are members of CREA (REALTOR®, REALTORS®) and/or the quality of services they provide (MLS®, Multiple Listing Service®)

Listing information last updated on September 8th, 2025 at 6:02pm MDT