

Courtesy Of Sherri L Herman Of NOW Real Estate Group

\$575,000 - 204 11710 87 Avenue, Edmonton

MLS® #E4453255

\$575,000

2 Bedroom, 2.50 Bathroom, 1,173 sqft

Condo / Townhouse on 0.00 Acres

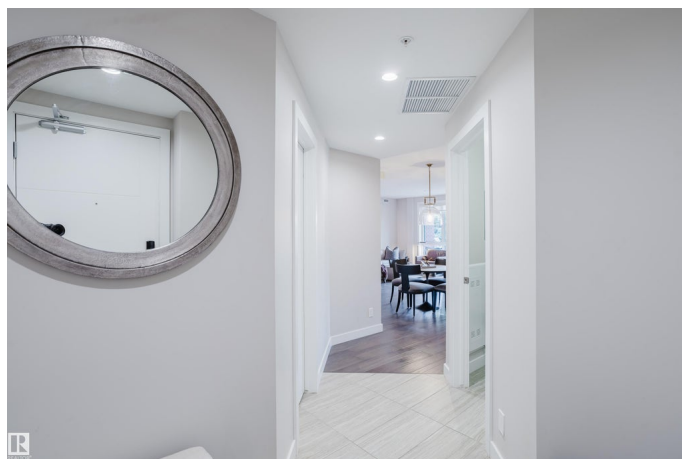
Windsor Park (Edmonton), Edmonton, AB

Experience refined living at The Bentley â€” a premier new condominium in prestigious Windsor Park, steps from the University of Alberta and Edmontonâ€™s River Valley. These sun-filled 2-bedroom, 2.5-bath residences feature solid concrete and steel construction, a timeless brick-and-stone exterior, and upscale finishes throughout. The open-concept kitchen, dining, and living areas boast sleek cabinetry, workstation sink with garburator, quartz counters/backsplash, stainless steel appliances, triple-pane windows, laminate floors, and a chic linear fireplace. The spacious primary offers a walk-in closet with built-ins and a spa-inspired ensuite with jetted tub and glass shower. The second bedroom includes two closets and its own ensuite with tub/shower. Extras include a guest powder room with closet, laundry room with added cabinetry, and one heated underground stall with storage. Live in Edmontonâ€™s most desirable pocket.

Built in 2016

Essential Information

MLS® #	E4453255
Price	\$575,000
Bedrooms	2
Bathrooms	2.50



Full Baths	2
Half Baths	1
Square Footage	1,173
Acres	0.00
Year Built	2016
Type	Condo / Townhouse
Sub-Type	Lowrise Apartment
Style	Single Level Apartment
Status	Active

Community Information

Address	204 11710 87 Avenue
Area	Edmonton
Subdivision	Windsor Park (Edmonton)
City	Edmonton
County	ALBERTA
Province	AB
Postal Code	T6G 0Y3

Amenities

Amenities	Air Conditioner, No Animal Home, No Smoking Home
Parking Spaces	1
Parking	Heated, Underground

Interior

Interior Features	ensuite bathroom
Appliances	Dishwasher-Built-In, Dryer, Microwave Hood Fan, Refrigerator, Stove-Electric, Washer, Window Coverings, See Remarks
Heating	Forced Air-1, Heat Pump, Natural Gas
Fireplace	Yes
Fireplaces	Wall Mount
# of Stories	4
Stories	1
Has Basement	Yes
Basement	None, No Basement

Exterior

Exterior	Steel, Brick, Stucco
Exterior Features	Low Maintenance Landscape, Public Transportation, Schools

Roof	SBS Roofing System
Construction	Steel, Brick, Stucco
Foundation	Concrete Perimeter

Additional Information

Date Listed	August 15th, 2025
Days on Market	1
Zoning	Zone 15
Condo Fee	\$655

DATA IS DEEMED RELIABLE BUT IS NOT GUARANTEED ACCURATE BY THE REALTORS® ASSOCIATION OF EDMONTON. COPYRIGHT 2025 BY THE REALTORS® ASSOCIATION OF EDMONTON. ALL RIGHTS RESERVED.Trademarks are owned or controlled by the Canadian Real Estate Association (CREA) and identify real estate professionals who are members of CREA (REALTOR®, REALTORS®) and/or the quality of services they provide (MLS®, Multiple Listing Service®)

Listing information last updated on August 16th, 2025 at 4:02pm MDT