

\$400,000 - 1131 35a Street, Edmonton

MLS® #E4454011

\$400,000

6 Bedroom, 2.00 Bathroom, 1,191 sqft
Single Family on 0.00 Acres

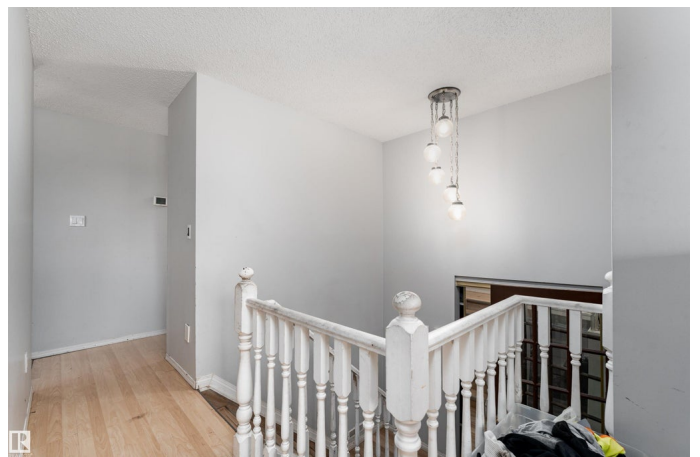
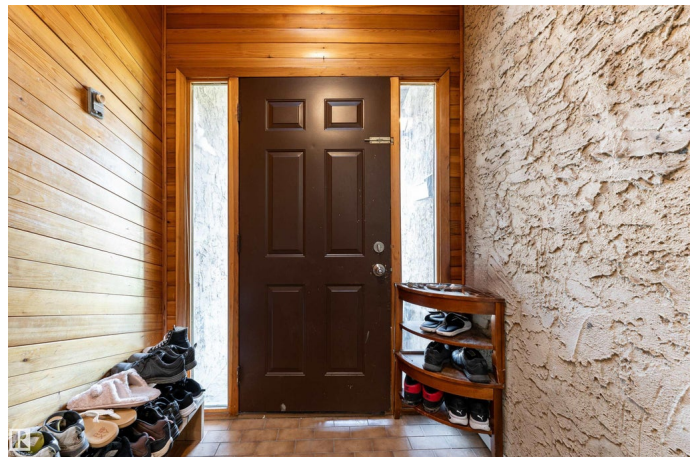
Crawford Plains, Edmonton, AB

Welcome to this spacious bi-level home in Crawford Plains, Edmonton! As you enter, you're greeted by a bright foyer leading to a large living room with a big window that fills the space with natural light. The kitchen has a warm, homey feel with plenty of counter space and cabinetry, along with a dedicated dining area. The upper level also features a primary bedroom, two additional bedrooms, and a 4-piece bathroom. The fully finished basement offers a generous rec room, three more bedrooms, a 4-piece bathroom, and a laundry area. Enjoy the outdoors with a deck and the convenience of a single attached garage.

Built in 1979

Essential Information

MLS® #	E4454011
Price	\$400,000
Bedrooms	6
Bathrooms	2.00
Full Baths	2
Square Footage	1,191
Acres	0.00
Year Built	1979
Type	Single Family
Sub-Type	Detached Single Family
Style	Bi-Level



Status Active

Community Information

Address 1131 35a Street
Area Edmonton
Subdivision Crawford Plains
City Edmonton
County ALBERTA
Province AB
Postal Code T6L 2L4

Amenities

Amenities Detectors Smoke
Parking Single Garage Attached

Interior

Appliances Dryer, Humidifier-Power(Furnace), Refrigerator, Stove-Electric, Washer
Heating Forced Air-1, Natural Gas
Stories 3
Has Basement Yes
Basement Full, Finished

Exterior

Exterior Wood, Stucco
Exterior Features Fenced, Fruit Trees/Shrubs, Golf Nearby, Playground Nearby, Public Transportation, Schools
Roof Asphalt Shingles
Construction Wood, Stucco
Foundation Concrete Perimeter

School Information

Elementary Crawford Plain School
Middle TD Baker School
High W.P. Wagner School

Additional Information

Date Listed August 21st, 2025
Days on Market 14
Zoning Zone 29

DATA IS DEEMED RELIABLE BUT IS NOT GUARANTEED ACCURATE BY THE REALTORS® ASSOCIATION OF EDMONTON. COPYRIGHT 2025 BY THE REALTORS® ASSOCIATION OF EDMONTON. ALL RIGHTS RESERVED. Trademarks are owned or controlled by the Canadian Real Estate Association (CREA) and identify real estate professionals who are members of CREA (REALTOR®, REALTORS®) and/or the quality of services they provide (MLS®, Multiple Listing Service®)

Listing information last updated on September 4th, 2025 at 4:18pm MDT