

\$299,900 - 112a 511 Queen Street, Spruce Grove

MLS® #E4458225

\$299,900

2 Bedroom, 1.00 Bathroom, 876 sqft
Condo / Townhouse on 0.00 Acres

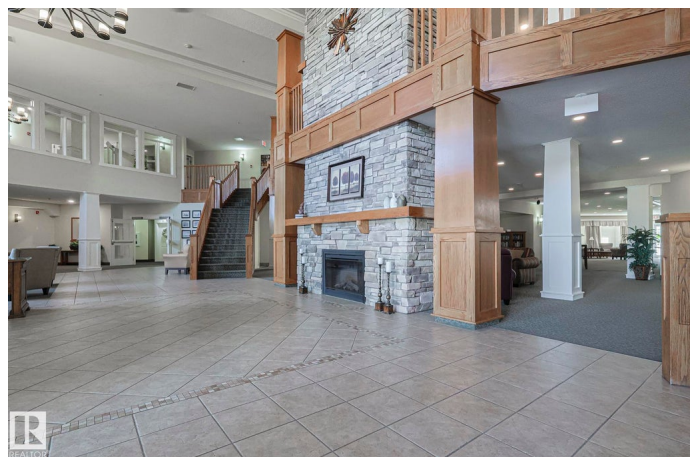
City Centre, Spruce Grove, AB

An Absolutely Perfect 1 bed + 1 DEN custom designed west facing unit in Windsor Estates In Spruce Grove! The Estates is known for being impeccably managed, having a wonderful vibrant community of 55+ living, 10/10 aesthetically maintained grounds(**new items added yearly like the outdoor gazebo/ pergola area), games nights, patios, and plenty of community events! Heated underground TITLED storage stall + cage storage, CLOSE TO THE ELEVATOR for quick in/out access! It's WALKING DISTANCE to the Rexall Health Center as well as the Spruce Grove trail walking system. STUNNING unit w custom features that this original owner picked out herself incl white shaker cabinets, custom backsplash and complimentary luxury vinyl plank. LIGHT FILLED unit with a west facing bedroom, living room and MASSIVE covered deck! In suite laundry/storage, big front door entrance and a perfect sized office/den! Beautiful Unit with lovely upgrades ready for a QUICK POSSESSION!

Built in 2014

Essential Information

MLS® #	E4458225
Price	\$299,900



Bedrooms	2
Bathrooms	1.00
Full Baths	1
Square Footage	876
Acres	0.00
Year Built	2014
Type	Condo / Townhouse
Sub-Type	Lowrise Apartment
Style	Multi Level Apartment
Status	Active

Community Information

Address	112a 511 Queen Street
Area	Spruce Grove
Subdivision	City Centre
City	Spruce Grove
County	ALBERTA
Province	AB
Postal Code	T7X 0G4

Amenities

Amenities	Parking-Plug-Ins, Parking-Visitor, Party Room, Recreation Room/Centre, Security Door, Social Rooms, Vinyl Windows, Storage Cage
Parking Spaces	1
Parking	Stall

Interior

Appliances	Dishwasher-Built-In, Dryer, Microwave Hood Fan, Refrigerator, Stove-Electric, Washer, Window Coverings
Heating	Fan Coil, Hot Water, Natural Gas
# of Stories	4
Stories	4
Has Basement	Yes
Basement	None, No Basement

Exterior

Exterior	Concrete, Stone, Vinyl
Exterior Features	Golf Nearby, Landscaped, No Through Road, Private Setting, Public Transportation, Schools, Shopping Nearby

Roof	Asphalt Shingles
Construction	Concrete, Stone, Vinyl
Foundation	Wood

Additional Information

Date Listed	September 17th, 2025
Days on Market	1
Zoning	Zone 91
Condo Fee	\$551

DATA IS DEEMED RELIABLE BUT IS NOT GUARANTEED ACCURATE BY THE REALTORS® ASSOCIATION OF EDMONTON. COPYRIGHT 2025 BY THE REALTORS® ASSOCIATION OF EDMONTON. ALL RIGHTS RESERVED. Trademarks are owned or controlled by the Canadian Real Estate Association (CREA) and identify real estate professionals who are members of CREA (REALTOR®, REALTORS®) and/or the quality of services they provide (MLS®, Multiple Listing Service®)

Listing information last updated on September 18th, 2025 at 3:17am MDT