

\$72,500 - 411 12831 66 Street, Edmonton

MLS® #E4460510

\$72,500

1 Bedroom, 1.00 Bathroom, 523 sqft

Condo / Townhouse on 0.00 Acres

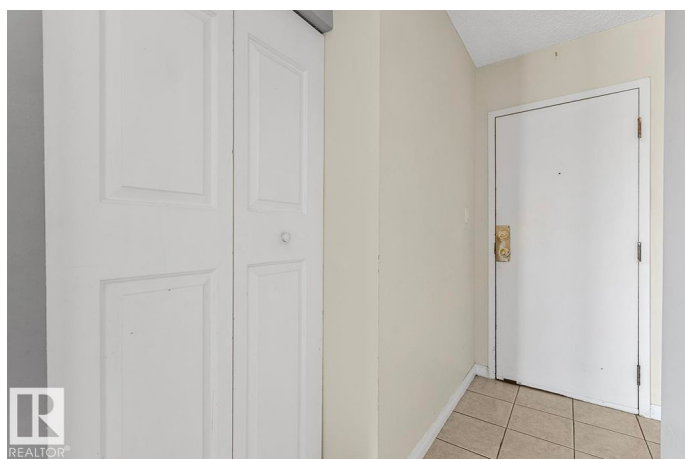
Belvedere, Edmonton, AB

This beautiful one bedroom apartment comes with over 520 sq. ft. of functional living space with features including a galley kitchen, spacious bedroom and an oversized west-facing balcony for morning coffees or evening sunsets, whatever you desire! Located in a secure concrete building with reinforced balconies, refreshed common spaces, security cameras and dual elevators. Hollyburn Towers is steps from public transit, schools, shopping, parks, and the Belvedere Transit Centre - ideal for anyone seeking affordable home ownership or an investment property.

Built in 1983

Essential Information

MLS® #	E4460510
Price	\$72,500
Bedrooms	1
Bathrooms	1.00
Full Baths	1
Square Footage	523
Acres	0.00
Year Built	1983
Type	Condo / Townhouse
Sub-Type	Apartment High Rise
Style	Single Level Apartment



Status	Active
--------	--------

Community Information

Address	411 12831 66 Street
Area	Edmonton
Subdivision	Belvedere
City	Edmonton
County	ALBERTA
Province	AB
Postal Code	T5L 0A4

Amenities

Amenities	Security Door
Parking	See Remarks

Interior

Appliances	Refrigerator, Stove-Electric
Heating	Baseboard, Electric
# of Stories	8
Stories	1
Has Basement	Yes
Basement	None, No Basement

Exterior

Exterior	Concrete
Exterior Features	Playground Nearby, Public Transportation, Schools, Shopping Nearby
Roof	Unknown
Construction	Concrete
Foundation	Concrete Perimeter

Additional Information

Date Listed	October 2nd, 2025
Days on Market	1
Zoning	Zone 02
Condo Fee	\$375

DATA IS DEEMED RELIABLE BUT IS NOT GUARANTEED ACCURATE BY THE REALTORS® ASSOCIATION OF EDMONTON. COPYRIGHT 2025 BY THE REALTORS® ASSOCIATION OF EDMONTON. ALL RIGHTS RESERVED. Trademarks are owned or controlled by the Canadian Real Estate Association (CREA) and identify real estate professionals who are members of CREA (REALTOR®, REALTORS®) and/or the quality of services they provide (MLS®, Multiple Listing Service®)

Listing information last updated on October 3rd, 2025 at 6:02am MDT